

SECTION OR SUBDIVISION *sector* $\frac{130}{31}$ CORNER No. *975*TWP. *2N*, RANGE *9E*, W.M.

CORNER DESCRIPTION

USDA-FOREST SERVICE

Index

V-1

File No.

CORNER RECORD (SEARCH)

(Ref. FSM 7151.4)

Tract or

Survey No.

Cor. No.

S.W. corner
Sec. 30T *2 N.* R. *9 E.*R.D. *Hood River*

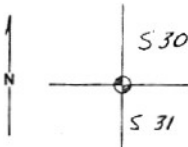
County

*Hood River*Merid. *Willamette*N.F. Mt. *Hood*

State

Oregon

CORNER DIAGRAM



DESCRIBE CORNER MONUMENT FOUND

None.

DESCRIBE BEARING TREES OR OTHER OFFICIAL ACCESSORIES FOUND

24" pine stump with visible scribing bears S. 71° W. 4.6 ft. dist. Original GLO stump remains bears N. 59° E. 9.2 ft. dist.

PHOTO IDENTIFICATION DATA

Photo No.

Filed At

Object Ident.

Ident. By

Signature

* see back of card

PLANE COORDINATE POSITION DATA

State *Oregon Zone North*X *715,219.18*Y *1,679,550.84*

Estab. By

*TEC**Agency*

DESCRIBE CORNER LOCATION RELATIVE TO NEAR-BY FEATURES, ALSO HOW TO REACH CORNER

From junction of N-20 and N-28 E. go southerly 0.4 mile on N-28E. Red flagged line goes straight down hill 1,000 feet, more or less to corner.

W.C.

Signature

Lawrence Lane

Title

Surveyor

Division

Headquarters

Date

5/27/81

7100-52 (3.68)

OVER

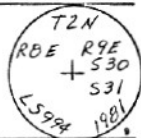
975

CORNER RECORD (PERPETUATION)

V-1

MONUMENT DESCRIBE NEW MONUMENT SET, OR WORK DONE TO PRESERVE EXISTING MONUMENT

Set aluminum cap on a 2-1/2" aluminum pipe 30" long 24" in the ground and built a mound of stone.



ACCESSORIES DESCRIBE NEW BT^Y WITNESS OBJECTS ETC. ESTABLISHED, OR WORK DONE TO PRESERVE EXISTING EVIDENCE

A fir 12" in diameter bears N. 55° E. 21.1 ft. dist., marked T. 2 N., R. 9 E., S30 BT.
A lodge pole pine 9" in diameter bears S. 68° E., 24.3 ft. dist., marked
T. 2 N., R. 9 E., S. 31 BT.

10

Work Done By Lawrence E. Jones Title Surveyor Date 5/27/81 State Registration No. LS 994
Certified Cor Record Prepared? Yes No Filed At _____ Date _____ 11

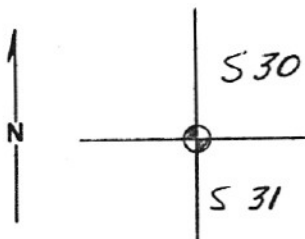
Index File No. V-1

CORNER RECORD (SEARCH)
(Ref. FSM 7151.4)

CC0975
Tract or Survey No. CS81-097 S.W. corner
Cor. Sec. 30 No. 30

T 2 N. 9 E. R.D. Hood River County Hood River
Merid. Willamette N.F. Mt. Hood State Oregon

CORNER DIAGRAM



DESCRIBE CORNER MONUMENT FOUND

None.

DESCRIBE BEARING TREES OR OTHER OFFICIAL ACCESSORIES FOUND

24" pine stump with visible scribing bears S. 71° W. 4.6 ft. dist. Original GLO stump remains bears N. 59° E. 9.2 ft. dist.

PHOTO IDENTIFICATION DATA

Photo No. _____
Filed At. _____
Object Ident. _____
Ident. By _____
Signature

DESCRIBE CORNER LOCATION RELATIVE TO NEAR-BY FEATURES, ALSO HOW TO REACH CORNER

From junction of N-20 and N-28 E. go southerly 0.4 mile on N-28E. Red flagged line goes straight down hill 1,000 feet, more or less to corner.

PLANE COORDINATE POSITION DATA

State Oregon Zone North
X 715,219.18
Y 1,679,550.84
Estab. By TEC
Agency

Signature

Title Surveyor

Division

Headquarters

Date

7100-52 (3.68)

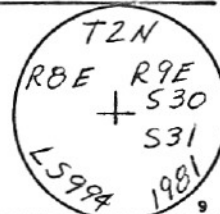
5/27/81

CORNER RECORD (PERPETUATION)

V-1

MONUMENT: DESCRIBE NEW MONUMENT SET, OR WORK DONE TO PRESERVE EXISTING MONUMENT

Set aluminum cap on a 2-1/2" aluminum pipe 30" long 24" in the ground and built a mound of stone.



ACCESSORIES: DESCRIBE NEW BT'S WITNESS OBJECTS ETC. ESTABLISHED, OR WORK DONE TO PRESERVE EXISTING EVIDENCE

A fir 12" in diameter bears N. 55° E. 21.1 ft. dist., marked T. 2 N., R. 9 E., S30 BT.
A lodge pole pine 9" in diameter bears S. 68° E., 24.3 ft. dist., marked T. 2 N., R. 9 E., S. 31 BT.

Work Done By Lawrence E. Jones Title Surveyor Date 5/27/81 State Registration No. LS 994

Certified Cor. Record Prepared? Yes No Filed At: _____ Date _____

REMARKS