

LAND CORNER MONUMENT RECORD

INDEX FILE No. R-11 USDA-FOREST SERVICE

LOCATION

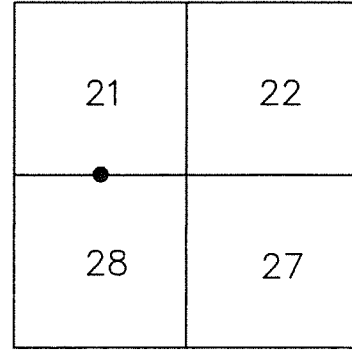
CC 974

R. 9 E.

HOOD RIVER COUNTY
STATE OF OREGON
WILLAMETTE MERIDIAN

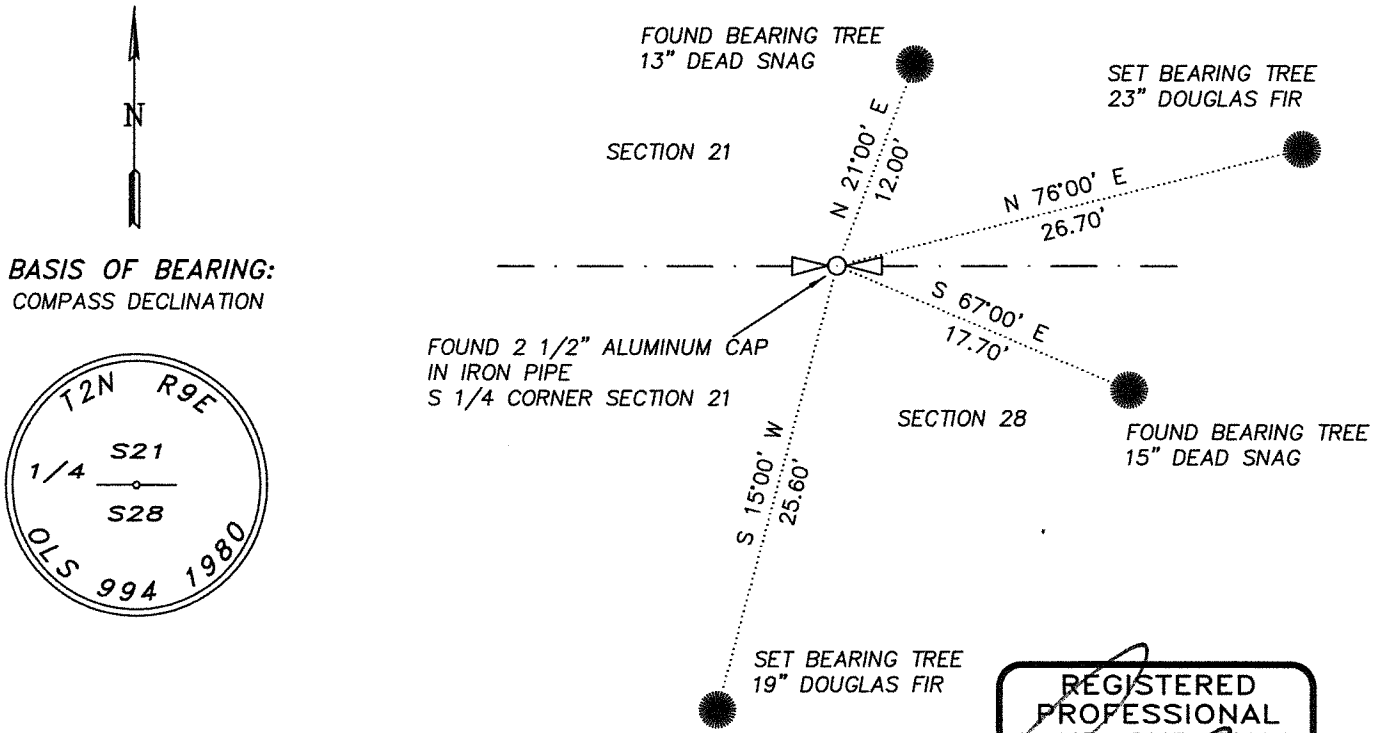
T.
2
N.

	6	5	4	3	2	1
	7	8	9	10	11	12
	18	17	16	15	14	13
	19	20	21	22	23	24
	30	29	28	27	26	25
	31	32	33	34	35	36

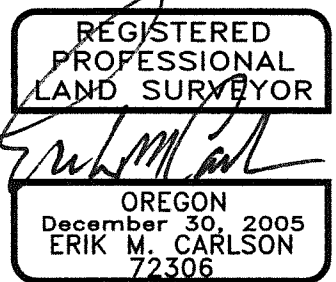
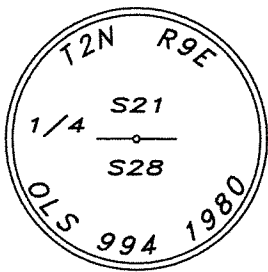


TOWNSHIP 2 NORTH RANGE 9 EAST SECTION 21 S 1/4 CORNER

TYPE OF MONUMENT; TIES TO BEARING TREES, OBJECTS, etc. (SKETCH)



BASIS OF BEARING:
COMPASS DECLINATION



FOUND QUARTER CORNER COMMON TO SECTION 21/28

FOUND A 2 1/2" ALUMINUM CAP ON IRON PIPE.

UPDATED CORNER NOTES:

From which

A 13" Dead snag (existing BT evidence) bears North 21° East a distance of 12.0' feet from Corner.

A 15" Dead snag (existing BT evidence) bears South 67° East a distance of 17.7' feet from Corner.

New References:

A 23" D.Fir, with tags (54-9 and 54-3), and washer, L.S. 72306, bears North 76°00' East a distance of 26.7' from Corner.

Marked: 1/4 S21 BT, painted red blaze and band.

A 19" D.Fir, with tags (54-9 and 54-3), and washer, L.S. 72306, bears South 15°00' West a distance of 25.6' from Corner.

Marked: T2N R9E S 28 BT, painted red blaze and band.

REMARKS: (History of Corner, etc.)

10/1980 - SET 2 1/2" ALUMINUM CAP ON 2 1/2" PIPE, 30" LONG, 24" IN GROUND AND MOUND OF STONE BY LAWRENCE E. JONES, LS 994.

DIRECTIONS TO CORNER: FROM INTERSECTION OF NF ROAD No. 2820 AND NF ROAD No. 2821 TRAVEL EASTERLY ON 2821 APPROXIMATELY 1.0 MILES. CORNER IS APPROXIMATELY 100' SOUTH OF ROAD.

NAME: ERIK M. CARLSON

DATE: DECEMBER 1, 2021

TITLE: TERRA SURVEYING

REGISTRATION NO. OR PLS 72306

SECTION OR SUBDIVISION $\frac{1}{4}$ COR $\frac{21}{28}$

CORNER No. 974

TWP 22, RANGE 9E, W.M.

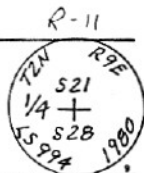
CORNER DESCRIPTION

this cor set by
proportion in 1980
by TEC

CORNER RECORD (PERPETUATION)

MONUMENT DESCRIBE NEW MONUMENT SET, OR WORK DONE TO PRESERVE EXISTING MONUMENT

Set aluminum cap on a 2-1/2 inch aluminum pipe, 30" long,
24" in the ground and built on a mound of stone



ACCESSORIES DESCRIBE NEW BT'S WITNESS OBJECTS ETC. ESTABLISHED, OR WORK DONE TO PRESERVE EXISTING EVIDENCE

A fir 11" in diameter bears N. 21° E., 12.0 ft. marked 1/4 S 21 (BT)
A white fir 15" in diameter bears S 69° E. 17.7 ft. marked 1/4 S 28 (BT)

W

Work Done By Lawrence E. Jongst Title Surveyor Date 10/80 State Registration No. LS 994

Certified Cor Record Prepared? Yes No Filed At: Date

REMARKS

Index

File No. R-11

CORNER RECORD (SEARCH)

(Ref. FSM 7151.4)

Tract or

Survey No. CS81-097

1/4 Cor.

Cor. Sec. 21-28

No. _____

T 2N R. 9E

R.D. Hood River

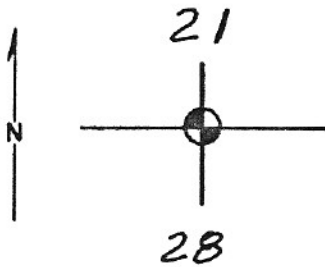
County Hood River

Merid. Willamette

N.F. Mt. Hood

State Oregon

CORNER DIAGRAM



DESCRIBE CORNER MONUMENT FOUND

None. Corner location established by proportionment.

DESCRIBE BEARING TREES OR OTHER OFFICIAL ACCESSORIES FOUND

None.

PHOTO IDENTIFICATION DATA

Photo No. _____

Filed At. _____

Object Ident. _____

Ident. By _____

Signature

PLANE COORDINATE POSITION DATA

State Oregon Zone North

X 719,718.18

Y 1,693,432.01

Estab. By TEC

Agency

Signature

Lawrence E. Jones

Title Surveyor

Division _____

Headquarters _____

Date

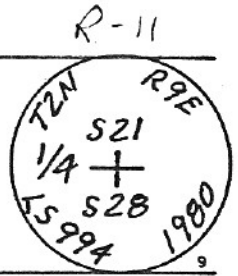
October, 1980

7100-52-(3.68)

CORNER RECORD (PERPETUATION)

MONUMENT: DESCRIBE NEW MONUMENT SET, OR WORK DONE TO PRESERVE EXISTING MONUMENT

Set aluminum cap on a 2-1/2 inch aluminum pipe, 30" long, 24" in the ground and built on a mound of stone



ACCESSORIES: DESCRIBE NEW BT'S WITNESS OBJECTS ETC. ESTABLISHED, OR WORK DONE TO PRESERVE EXISTING EVIDENCE

A fir 11" in diameter bears N. 21° E., 12.0 ft. marked 1/4 S 21 (BT)
A white fir 15" in diameter bears S 69° E. 17.7 ft. marked 1/4 S 28 (BT)

Work Done By Lawrence E. Jones Title Surveyor

Date 10/80

State Registration No. or Agency

LS 994

Certified Cor. Record Prepared? Yes

No

Filed At: _____

Date _____

REMARKS