

SECTION OR SUBDIVISION

CORNER No. 971

TWP. 2N, RANGE 9 E, W.M.

CORNER DESCRIPTION

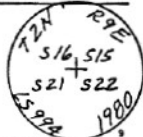
this cor set by
proportion in 1980
by T.E.C.

CORNER RECORD (PERPETUATION)

17-13

MONUMENT. DESCRIBE NEW MONUMENT SET, OR WORK DONE TO PRESERVE EXISTING MONUMENT

Set aluminum cap on a 2-1/2 inch aluminum pipe, 30" long
24 " in the ground and built a mound of stone.



ACCESSORIES DESCRIBE NEW BT'S WITNESS OBJECTS ETC. ESTABLISHED, OR WORK DONE TO PRESERVE EXISTING EVIDENCE

- A hemlock 8" in diameter bears N. 16° E. 41.4 ft. dist. marked T. 2 N., R. 9 E., S15 (BT)
- A fir 6" in diameter bears S. 8° E., 35.4 ft. dist. marked T. 2 N., R. 9 E., S22 (BT)
- A hemlock 5" in diameter bears S. 31° W., 95.0 ft. dist. marked T. 2 N., R. 9 E., S21 (BT)
- A hemlock 6" in diameter bears N. 16° W., 41.0 ft. dist. marked T. 2 N., R. 9 E., S16 (BT)

V

10

Work Done By Lawrence E. Jones Title Surveyor Date 10/80 State Registration No. LS 994
or Agency

Certified Cor. Record Prepared? Yes No Filed At: Date 11

REMARKS

Index

File No. N-13

CORNER RECORD (SEARCH)

(Ref. FSM 7151.4)

Tract or

Survey No. CS81-097

Cor.

No.

Cor. Sec. 15-16-21-22

T 2 N. 9 E.

R.D. Hood River

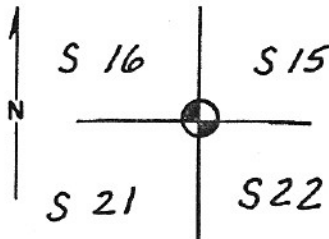
County Hood River

Merid. Willamette

N.F. Mt. Hood

State Oregon

CORNER DIAGRAM



DESCRIBE CORNER MONUMENT FOUND

None - Corner location established by proportionment

DESCRIBE BEARING TREES OR OTHER OFFICIAL ACCESSORIES FOUND

None.

PHOTO IDENTIFICATION DATA

Photo No. _____

Filed At. _____

Object Ident. _____

Ident. By _____

Signature

PLANE COORDINATE POSITION DATA

State Oregon Zone North

X 724,941.37

Y 1,696,179.14

Estab. By TEC

Agency

Signature

DESCRIBE CORNER LOCATION RELATIVE TO NEAR-BY FEATURES, ALSO HOW TO REACH CORNER

From junction of roads N-20 & N-21, go n.e. on N-21 - 1.9 mi. to road marked "dead end". Go north on dead end road 150 ft, more or less to fork, take right fork to end of road in clear cut. Corner lies north at edge of clear cut.

Title

Division

Headquarters

Date

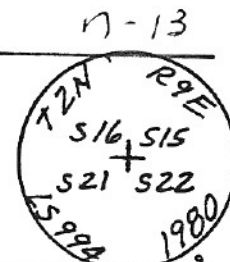
October, 1980

7100-52 (3-68)

CORNER RECORD (PERPETUATION)

MONUMENT. DESCRIBE NEW MONUMENT SET, OR WORK DONE TO PRESERVE EXISTING MONUMENT

Set aluminum cap on a 2-1/2 inch aluminum pipe, 30" long 24" in the ground and built a mound of stone.



ACCESSORIES DESCRIBE NEW BT'S WITNESS OBJECTS ETC. ESTABLISHED, OR WORK DONE TO PRESERVE EXISTING EVIDENCE

- A hemlock 8" in diameter bears N. 16° E. 41.4 ft. dist. marked T. 2 N., R. 9 E., S15 (BT)
- A fir 6" in diameter bears S. 8° E., 35.4 ft. dist. marked T. 2 N., R. 9 E., S22 (BT)
- A hemlock 5" in diameter bears S. 31° W., 95.0 ft. dist. marked T. 2 N., R. 9 E., S21 (BT)
- A hemlock 6" in diameter bears N. 16° W., 41.0 ft. dist. marked T. 2 N., R. 9 E., S16 (BT)

Work Done By Lawrence E. Jones Title Surveyor

Date 10/80

State Registration No. _____

or Agency LS 994

Certified Cor. Record Prepared? Yes No

Filed At: _____

Date _____

REMARKS