

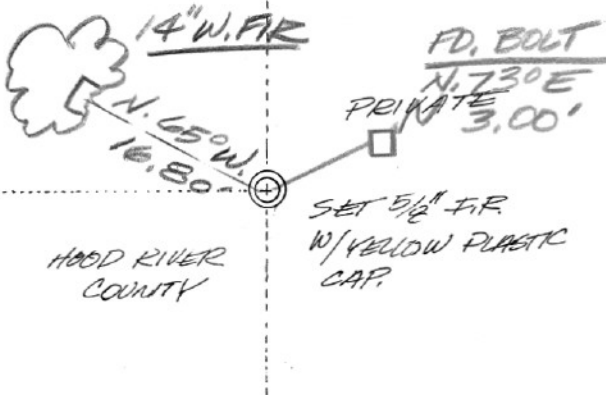
SECTION OR SUBDIVISION

1/10TH CORNER S. 6 1/5

CORNER No. 956

TWP. 1N, RANGE 11 E, W.M.

CORNER DESCRIPTION



CORNER IS AN
 5/8" I.R. W/ YELLOW
 PLASTIC CAP.

SET: 4-20-84

HOOD RIVER
COUNTY

FD. BOLT
 N. 73° E
 PRIVATE 3.00'
 SET 5/8" I.R.
 W/ YELLOW PLASTIC
 CAP.

W.O. REF.

SEE DRAWING NO.

89012

CARD

OF