

SECTION OR SUBDIVISION

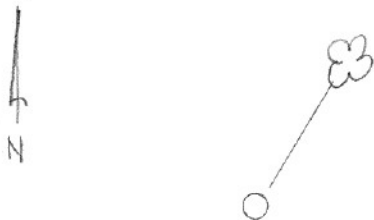
9/10  
16/15

TWP. 1 N., RANGE 10 E, W.M.

CORNER No. 850

CORNER DESCRIPTION

2" I.P. 30" ABOVE GROUND  
PAINTED WHITE. ALUMINUM  
F.S. TAG ON 14" OAK W/  
BLAZE (COULD BE B.T.) BEARS  
N28°E, APPROX. 70'. TO REACH  
COR. FOLLOW A S. BRG. (SEE  
PHOTO) FROM BEND IN THE RD.  
A BLAZED LINE RUNS E. AND  
W. THIS LINE IS JUST OVER  
THE BREAK OF HILL. FIND  
BLAZED LINE AND GO W.



see card ~~2 of 2~~  
3 of 3

W.O. REF.

7/17/70

CARD 1 OF 3

Over →

This pipe bears approx  $S 65^{\circ} E$   
150'-200' from the corner established  
in 1984.

~~RTA~~

850

SECTION OR SUBDIVISION

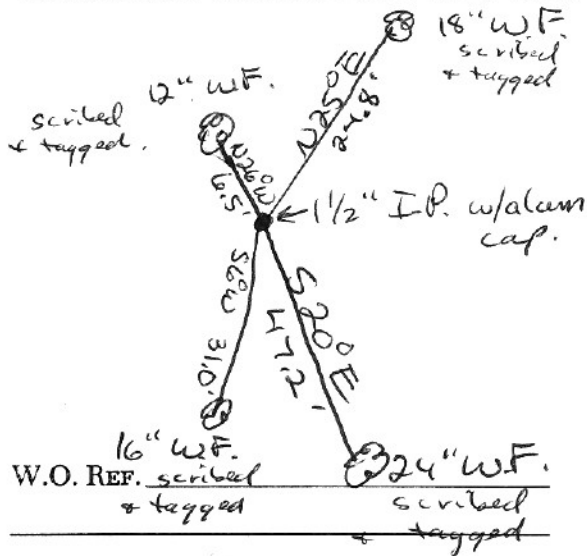
9/10  
16/15

CORNER No.

850

TWP. 1N, RANGE 10, W.M.

CORNER DESCRIPTION



cor. is 1 1/2" I.P. w/ alum cap. Corner was reset by double proportion in 1994.

Trees were scibed in 1978. we changed distances & bearings on tags to fit new corner.

over →

CARD

2

OF

23

This corner had been set by double  
proportion in 1978. Due to the  
recovery of the original  $\frac{1}{4}$  corner  
between secs. 16/15 NW10E, the  
sec. cor. moved 16.80' north.

RTA

850

SECTION OR SUBDIVISION

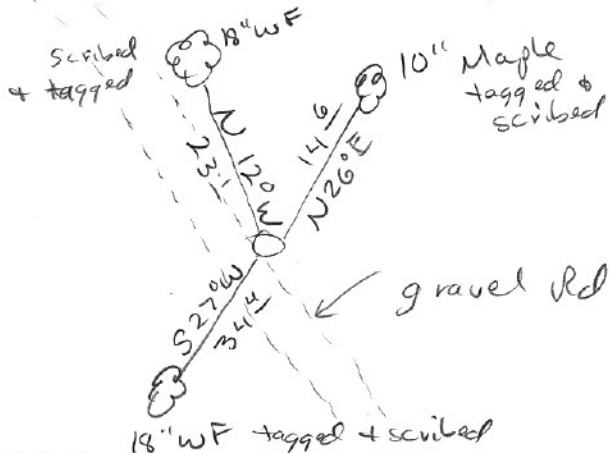
9/10  
16/15

CORNER No.

850

TWP. 12, RANGE 10, W.M.

CORNER DESCRIPTION



Drove 1 1/2" IP  
 w/ alum cap directly  
 over DLC  
 Iron rod. Corner  
 had been set  
 incorrectly in 1984.

Jun. 22, 1994

W.O. REF.

CARD

3

OF

3