

SECTION OR SUBDIVISION

33 | 34

CORNER No. 786 838TWP. 2 N., RANGE 11..... E, W.M.

CORNER DESCRIPTION



stone by  
Wilhelm  
1955

FD. 10x8x10 ROCK W/ 1/4  
ON TOP, 2" I.P. 5" ABOVE  
GROUND 2' W. OF FENCE LINE.  
NO EVIDENCE OF ORIG. COR.  
SET 2 B.T.s:  
26" FIR N, 50'  
10" FIR S2W, 36' BLAZED.  
FD ELEV. MKER BY R. KENNEY,  
2060 6/24/64. REF'D. TO 16"  
DAK WHICH IS 15' S. FROM HUSKY  
RIDGE RD FROM WHICH COR. (OVER)

W.O. REF. VIST'D. BY H.R. Co CETA  
CREW (D.F.), 3-78

CARD 1 OF 2

see cord 282

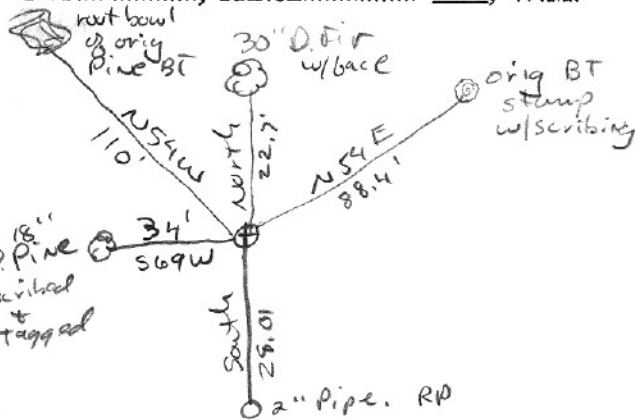


SECTION OR SUBDIVISION  $\frac{1}{4}$  cor 33/34

CORNER No. 838

TWP. 2N, RANGE 11, W.M.

CORNER DESCRIPTION



set 1 1/2" IP w/ brass  
 cap. from orig BT  
 stump. placed  
 Wilhelm stone along  
 side new pipe.  
 Kept 2" pipe 28'  
 south as R.P.

W.O. REF. \_\_\_\_\_

CARD 2 OF 2