

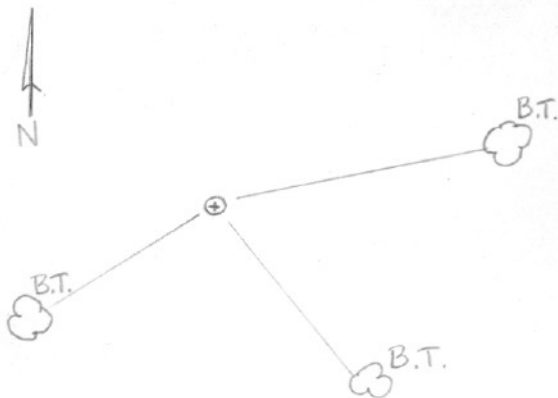
SECTION OR SUBDIVISION

16 | 15

1/4 CORNER No. 809

TWP. 1 N., RANGE 11 E., W.M.

CORNER DESCRIPTION



SET 2" BRASS MON.
 FD. ROCK "CALL" SIZE, W/
 FAINT SCRIBING. NO EVIDENCE
 OF ORIG. B.T.S. SET 3 B.T.S.
 16" FIR N76°E, 41.7'
 20" FIR S43°E, 34.8'
 24" FIR S64°E, 27.0'

W.O. REF. VISTO. BY C. DENNIS
 KRAMER, WASCO COUNTY SURVEY-
 OR, 6/10/77

CARD 1 OF 1

CC 809

HOOD RIVER COUNTY RESTORATION FORM

Section: 16 Township: 1N Range: 11E DATE: 6/27/13

CORNER DESIGNATION
EAST QUARTER CORNER

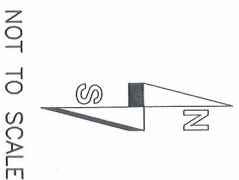
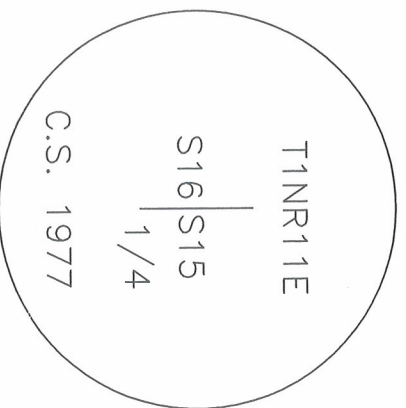
- _____ Condition Report Only
- _____ Not Found
- _____ Renewed
- _____ Unrecorded
- _____ Surveyed In
- Referenced Out

Previous Renewals/Surveys, etc. US DEPUTY SURVEYOR HENRY MELDRUM CONTRACT NO. 436 DATED APRIL 26, 1882 SUBDIVIDED THIS TOWNSHIP NOV. 1ST THROUGH THE 10TH, 1882; HOOD RIVER COUNTY CORNER CARD NO. 809

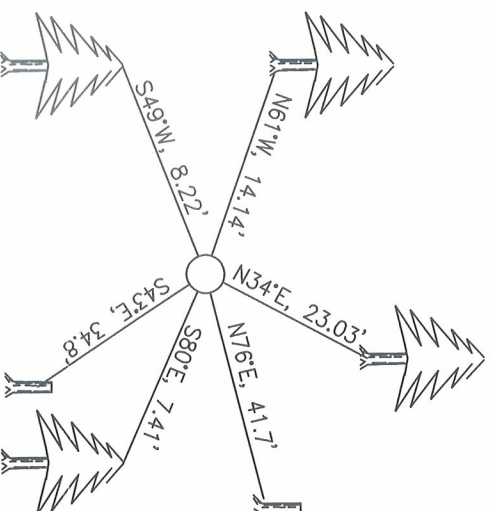
Monument(s) & Accessories Found: (Condition and Source)

FOUND 1" IRON PIPE WITH 2" BRASS CAP; 0.9' ABOVE GROUND WITH BASALT STONE OF APPROXIMATE GLO DIMENSIONS (NO MARKS) LYING ON EAST SIDE. REFERENCES FROM CORNER CARD NO. 809: HIGH STUMP WITH SCRIBING, N76°E, 41.7'; HIGH STUMP WITH SCRIBING, S43°E, 34.8'

Monument Detail



Sketch



Monument Set (Procedures and Description)

NO NEW MONUMENT SET

New Accessories

NEW ACCESSORIES WERE ESTABLISHED WITH A SILVA HAND COMPASS AND BEARINGS ARE REPORTED TO THE NEAREST DEGREE DISTANCES WERE MEASURED TO A SPIKE AT SIDE CENTER WITH A STEEL BUCKERS TAPE

NEW REFERENCES:

- 12" FIR SCRIBED "1/4 S15 RP", N34°E, 23.03' SIDE CENTER
- 8" FIR SCRIBED "1/4 S15 RP", N80°E, 7.41' SIDE CENTER
- 10" FIR SCRIBED "1/4 S16 RP", S49°W, 8.22' SIDE CENTER
- 10" FIR SCRIBED "1/4 S16 RP", N61°W, 14.14' SIDE CENTER
- SET STEEL FENCE POST NORTH, 1.0'

Location & Comments

Compass Declination 18° EAST
Firm/Agency LONGVIEW TIMBER CORP.

Surveyors Seal

Address 10 INTERNATIONAL WAY
LONGVIEW, WA 98632

Party Chief DAVID L SIMES
Notes DAVID L SIMES
Witness JASON HARPER
COLEY CAMPBELL

**REGISTERED
PROFESSIONAL
LAND SURVEYOR**

Jason L. Simes
OREGON
NOVEMBER 10, 2009
JASON L. SIMES
83256PLS

Renews 6-30-2014