

SECTION OR SUBDIVISION

 $\frac{1}{4}$ cor 7/8

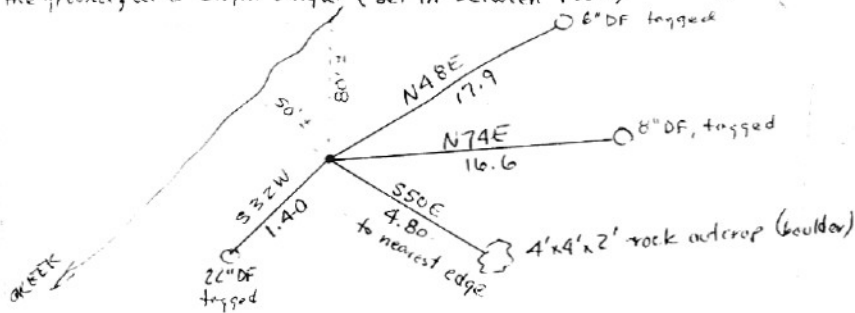
CORNER No.

694

TWP. 12, RANGE 11 E, W.M.

CORNER DESCRIPTION

Set 1½" x 30" galvanized iron pipe with 2½" brass cap stamped for this corner.
 22" in the ground, at a slight angle (Set in between rocks)



(Book 1 Page 28 of Trantow field notes) Set January 4, 1989.

W. REMARKS: (History of corner, etc.)

Set circa 1971 by Hood River County, based on now-unacceptable section corner to the South. Calculated position created in 1984 survey of Section 7 for Champion International. New position established in 1988 by Trantow survey in Section 8.

Position implied but not shown in 1910 plat of Glenhurst Orchards (Bk.2, Pg.6 of Plats).

SECTION OR SUBDIVISION

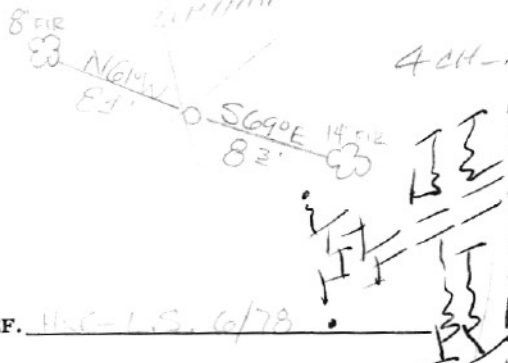
7/8

CORNER No. 694

TWP. 1N, RANGE 11 E, W.M.

CORNER DESCRIPTION

MARCH-16-83
NEED TO CHECK
CORNER MARK BY
EXAMINATION



FID. COR. AS DESCRIBED SET A
 B.C. 1 1/4" x 6" ANGLE COUNTER
 IN PLACE OF STAB. SET 2 BITS
 TAGGING, PLACING AND SCRIBING
 A CREEK IS AT 23' TO FIND COR.
 TAKE 1ST RIGHT OFF 2ND ANGLE
 THEN ANOTHER 2ND LEFT LIGHT AND
 FOLLOW RD TO OLD BRIDGE LAID-
 ING WALK N. TO 2 STUMPS W/
 PINK FLAGGING ON NW EDGE OF CLEAR-
 CUT, FOLLOW BLUE & WHITE FLAGGING.

CS
SC
BT

W.O. REF. HRC-1.S. 6/78

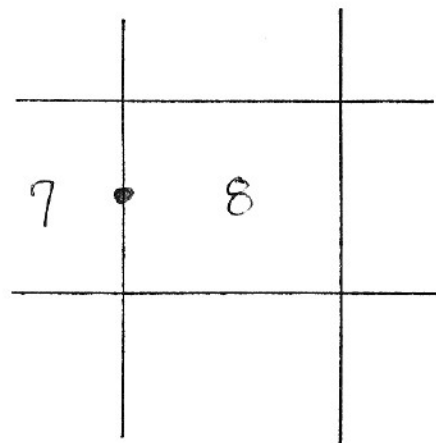
CARD 2 OF 2

CC0694

LAND CORNER MONUMENT RECORD

LOCATION

	6	5	4	3	2	1	
	7	● 8	9	10	11	12	
	18	17	16	15	14	13	
	19	20	21	22	23	24	
	30	29	28	27	26	25	
	31	32	33	34	35	36	

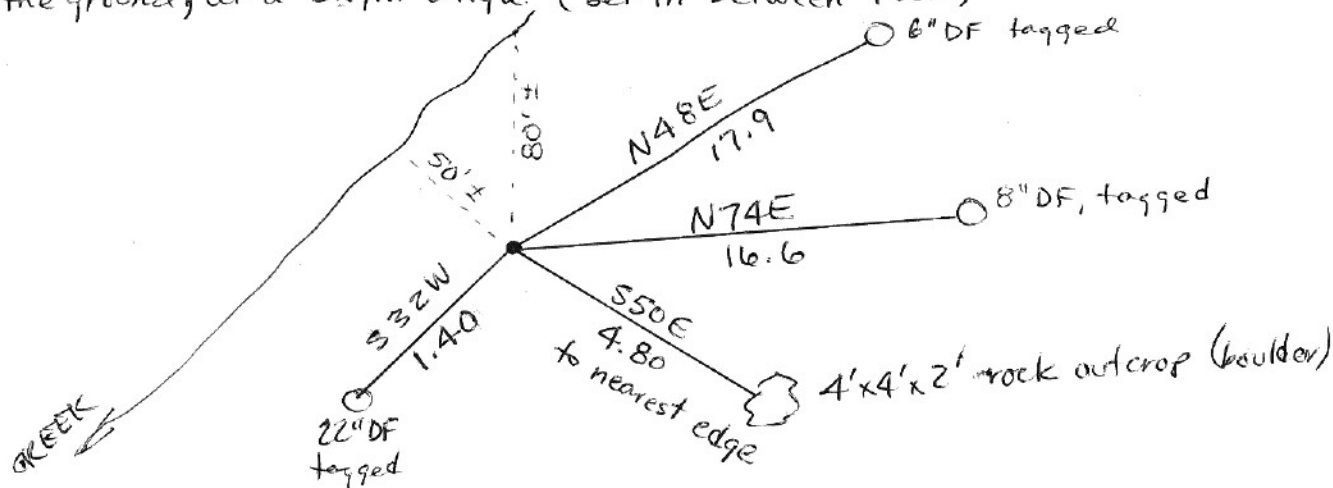


TOWNSHIP 1 North RANGE 11 East SECTION 8

TYPE OF MONUMENT; TIES TO BEARING TREES, OBJECTS, etc.

(SKETCH)

Set $1\frac{1}{2}$ " x 30" galvanized iron pipe with $2\frac{1}{2}$ " brass cap stamped for this corner.
22" in the ground, at a slight angle. (Set in between roots)



(Book 1 Page 28 of Trantow field notes) Set January 4, 1989.

REMARKS: (History of corner, etc.)

Set circa 1971 by Hood River County, based on now-unacceptable section corner to the South. Calculated position created in 1984 survey of Section 7 for Champion International. New position established in 1988 by Trantow survey in Section 8.

Position implied but not shown in 1910 plat of Glenhurst Orchards (Bk.2, Pg.6 of Plats).

REGISTERED
PROFESSIONAL
LAND SURVEYOR

Terry N. Trantow

OREGON
DEC. 15, 1978
TERRY N. TRANTOW
1799

NAME

Terry N. Trantow

TITLE

LS 1799

DATE

2 February 1989