

LAND CORNER MONUMENT RECORD

INDEX FILE No. A11 USDA-FOREST SERVICE

LOCATION

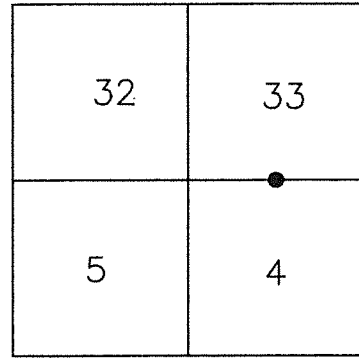
CC 660

HOOD RIVER COUNTY
STATE OF OREGON
WILLAMETTE MERIDIAN

R. 8 E.

T.
2
N.

			●			
	6	5	4	3	2	1
	7	8	9	10	11	12
	18	17	16	15	14	13
	19	20	21	22	23	24
	30	29	28	27	26	25
	31	32	33	34	35	36



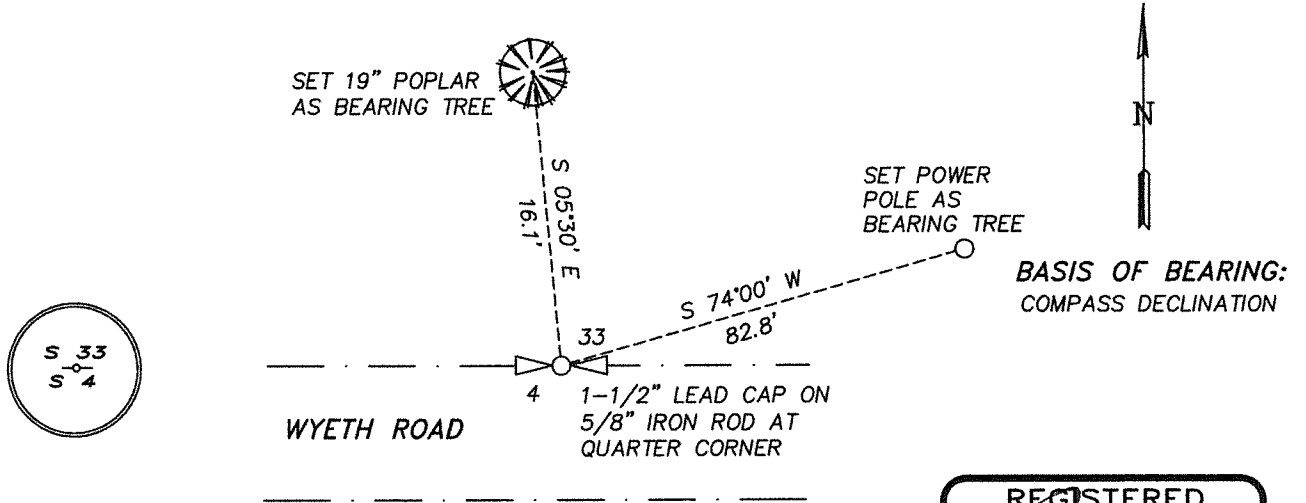
TOWNSHIP 2 NORTH

RANGE 8 EAST

SECTION 1/4 CORNER 4/33

TYPE OF MONUMENT; TIES TO BEARING TREES, OBJECTS, etc.

(SKETCH)



REGISTERED
PROFESSIONAL
LAND SURVEYOR

Erik M. Carlson

OREGON
December 30, 2005
ERIK M. CARLSON
72306

Expires: December 31, 2023

Found 5/8" iron rod with lead cap monumenting the Quarter corner (A-11) common to Section 33 and Section 4 of Township 2 North, Range 8 East.

New references set:
19" poplar with tags and washer bears (mag) North 05:30' West a distance of 16.1 feet.
power pole with tags and washer bears (mag) North 74' East a distance of 82.8 feet.

REMARKS: (History of Corner, etc.)

8/1935 - FOUND 3/4" BOLT AND BT. SET MONUMENT.
BONNEVILLE LANDS PROJECT MAP, 0-7-4 OHR
12/1984 - USFS CORNER CARD, FOUND MARKED STONE, NO MENTION OF 1935 MONUMENT
9/1993 - MONUMENT RECOVERED BY L.S.2209 ON C.S.93070.

DIRECTIONS TO CORNER: FROM INTERSECTION OF SE FRONTAGE ROAD AND WYETH ROAD HEAD EASTERLY ON WYETH ROAD APPROXIMATELY HALF A MILE. MONUMENT IS ON THE NORTH SIDE OF THE ROAD IN THE GRAVEL SHOULDER, A FEW INCHES BELOW THE SURFACE.

NAME: ERIK M. CARLSON

DATE: JULY 20, 2022

TITLE: TERRA SURVEYING

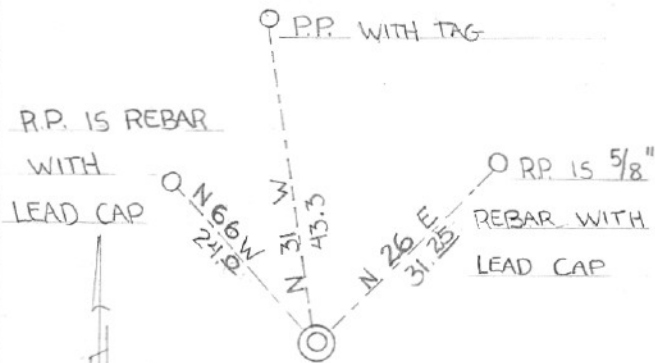
REGISTRATION NO. OR PLS 72306

SECTION OR SUBDIVISION S1/4 Sec. 33

CORNER No.660.....

TWP...3N....., RANGE...8E....., W.M.

CORNER DESCRIPTION



CORNER IS 5/8" REBAR
WITH LEAD CAP ON north
shoulder of Road

W.O. REF. _____

CARD 1 OF 1