

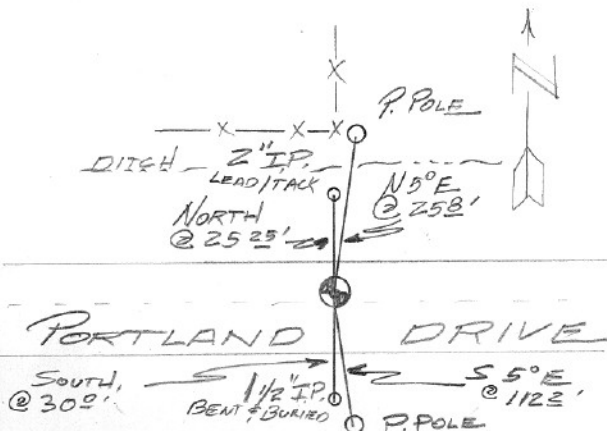
SECTION OR SUBDIVISION

1/4 COR  $\frac{10}{15}$ 

CORNER No. 655

TWP. 2 N., RANGE 10 E., W.M.

CORNER DESCRIPTION



W.O. REF. HOOD RIVER CO. ROAD DEPT.

BOOK 1-90, pg 54

FOUND 1" IRON PIPE  
 ENCASED IN TOP PORTION  
 OF OLD MONUMENT CASE,  
 WHICH WE REPLACED WITH  
 A HOOD RIVER CO. BRASS  
 CAP, INSIDE OF A NEW  
 MONUMENT CASE.

FOUND B.C. IN MON BOX, 6-20-90  
 TIED R.P.'S AS SHOWN

CARD 1 OF 1

Cor#655  $\frac{1}{4}$  cor 10/15 2N10E

Murray Kay set a stone in 1911 by running east from the sec cor 2645.4'. I am not sure why he chose that distance. Kay noted a pipe 30' south of his stone. HRC monumented a found pipe sometime during the 1970's and found a pipe 30' south of the monument. This corner fits the old measurements to the east and west.