

SECTION OR SUBDIVISION E 1/4 SEC. 30

CORNER No. 647

TWP. 1 N, RANGE 10 E, W.M.

CORNER DESCRIPTION

SECONDARY RD.

FD 1/2 INCH

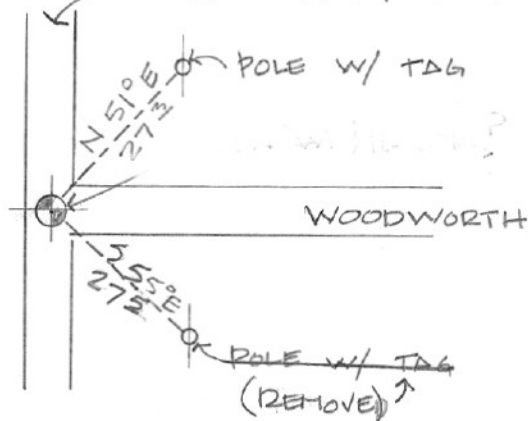
REBAR

97-00 RISER CEMENTED IN W/LID

AROUND CORNER - REEFERED

WITH NAILS 1' AT BEARING

7-72 HR CG LP + RW



W.O. REF.

CARD OF