

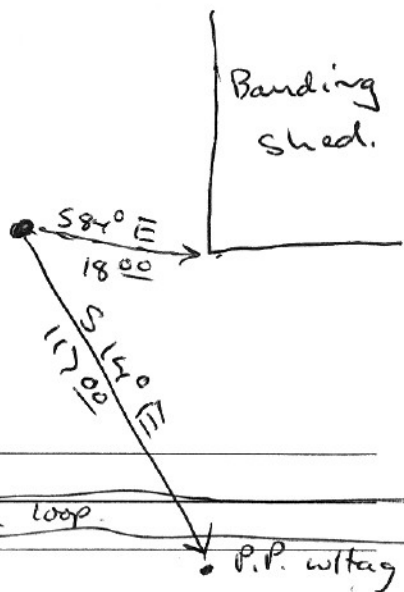
SECTION OR SUBDIVISION Sec 11 W 1/4
TWP. 1N, RANGE 10E, W.M.

CORNER No. ~~775~~ 606

CORNER DESCRIPTION

cor. is 1 1/2" I.P.
w/ brass cap set flush
in asphalt in panels
mill yard.

set by H.R.C.O.
1977.



W.O. REF.

Near creek loop.

P.P. with tag

CARD 1 OF 3

SECTION OR SUBDIVISION

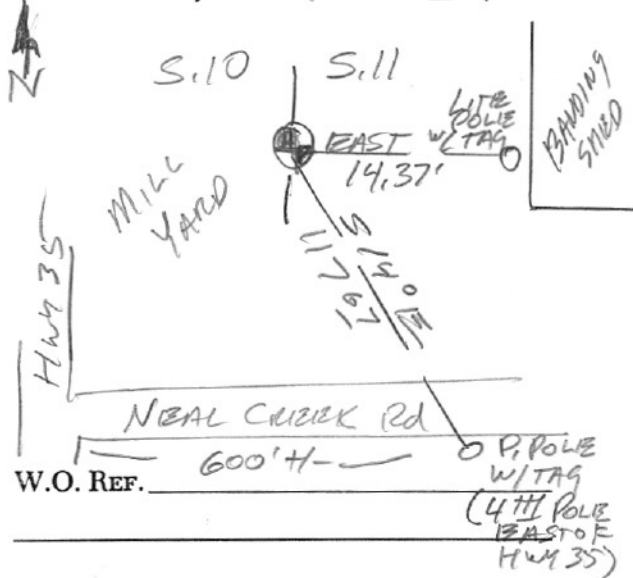
1/4 10/11

CORNER No.

606

TWP. 1N, RANGE 10E, W.M.

CORNER DESCRIPTION



3-6-01 RIZCOVERED
 SNEAKED 1/2" IP IN A.C.
 OF MILL YARD AS PER
 CARD 1, SET NEUTRS
 AS SHOWN; IP HAS BRASS
 STEM/120XT INSIDE.

CARD 4 OF 4
 (3-6-01, 2 & 3 MISSING)