

SECTION OR SUBDIVISION

24/19
25/30

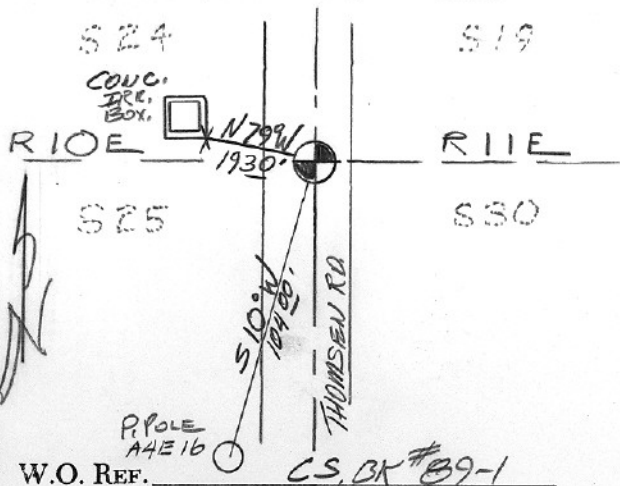
CORNER No.

597

TWP. 2 N, RANGE 10, 11 E, W.M.

CORNER DESCRIPTION

11-89



SET B.C. IN MON. BOX OVER
I.P. IN THOMSEN RD.
NO BEARING OBJECTS ON
EAST

old records show
two 1 1/2" pipes 18' E
& W of corner.

CARD

1 OF 1
OVER

