

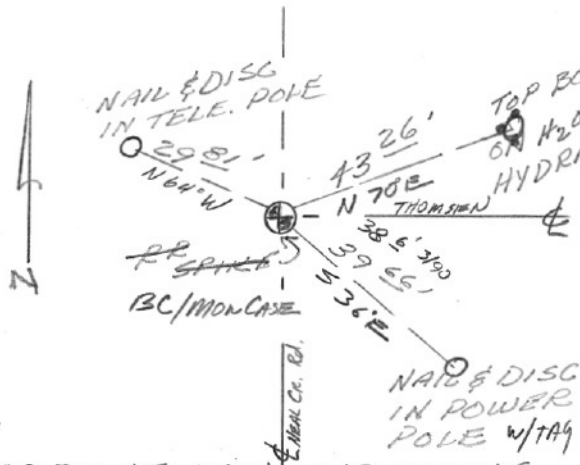
C.N. 1/16 COR

SECTION OR SUBDIVISION SEC 36

CORNER No. 571

TWP. 2 N., RANGE 10 E., W.M.

CORNER DESCRIPTION



R.R. SPIKE

Spike replaced  
 in 1975 by H.R.Co.  
 with MON case  
 & brass cap.

3-28-90 - CHECKED RPS

W.O. REF. NEWTON SURVEYING

C.O. # 1057-0-72 7/6/72

FLD. BK. 1-90 p. 27

CARD 1 OF 1