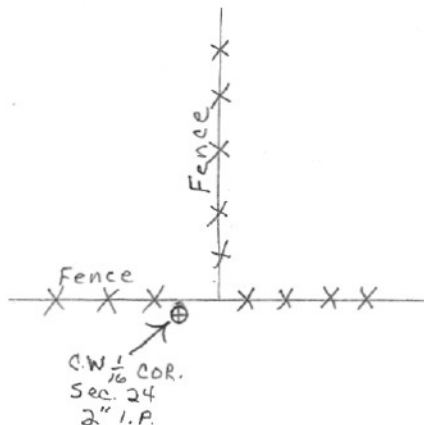


SECTION OR SUBDIVISION 24

CORNER No. 567

TWP. 2N, RANGE 10 E, W.M.

CORNER DESCRIPTION



QW $\frac{1}{16}$ CORNER
 FO. $\frac{1}{2}$ " I.P. RESET 2" I.P.
 IN CEMENT WITH BRASS
 CAP STAMPED "NEWTON
 SURVEYING CO." CORNER
 IS IN E/W FENCE & IS
 APPROX 6' WEST OF
 N/S FENCE

W.O. REF. 1031-PG-72

WEBSTER

CARD 1 OF 1