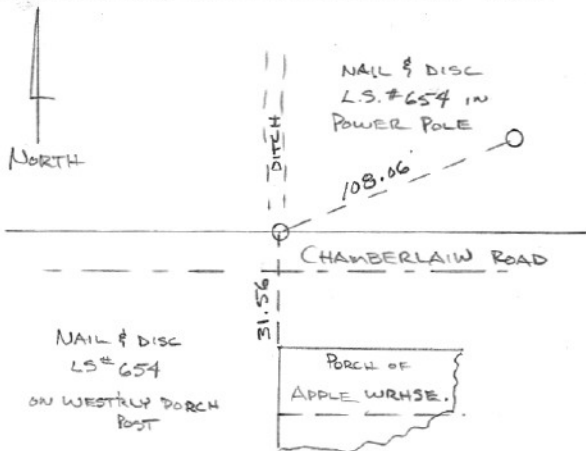


SECTION OR SUBDIVISION C.W. 1/16 SEC. 22

CORNER No. 549

TWP. 2N., RANGE 10E, W.M.

CORNER DESCRIPTION



FD. 1/4" IRON PIPE IN
1/2 OF CHAMBERLAIN RD.
APPROX. 6' NORTH OF E.

W.O. REF. _____

#1013-0-71 N.S. Co.

HAWTHORNE

CARD 1 OF 1