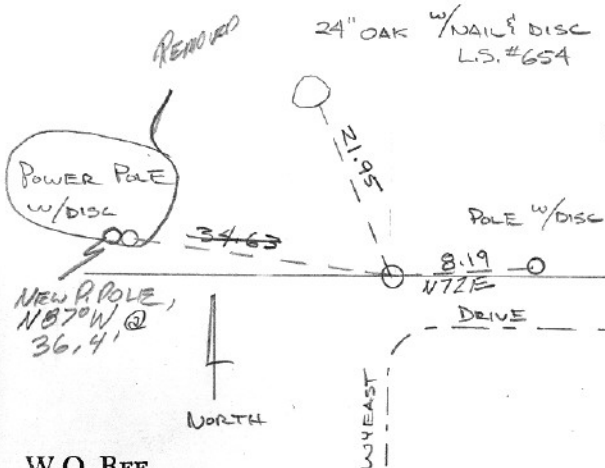


SECTION OR SUBDIVISION  $\frac{1}{4}$  SEC.  $\frac{15}{22}$

CORNER No. 545

TWP. 2 N, RANGE 10 E, W.M.

CORNER DESCRIPTION



FD. 1" IRON PIPE 1'  
BELOW GROUND NORTH  
OF WYEAST DRIVE.

JUNE 1989

FD. 1" IRON PIPE 1' BELOW  
GROUND; DROVE REBAR ALONG  
I.P., SET MON BOX w/ CONCRETE &  
SET HRC BRASS CAP. TAGGED GUY  
POLE TO EAST; TIED/TAGGED NEW P. POLE  
@ N87°W, 36.4' (OVER)

W.O. REF.

# 1013-0-71 U.S.C.O.

HAWTHORNE

CARD 1 OF 1

Hood River County  
1A  
S. 15  
—•—  
S. 22  
1989  
T2N R10E W4