

SECTION OR SUBDIVISION $\frac{1}{4}$ $\frac{4}{9}$

CORNER No. 505

TWP. 2N, RANGE 10 E, W.M.

CORNER DESCRIPTION

1 1/4" I.P. REPLACED
BY BRASS CAP
SET IN MONUMENT
CASE BY H.R.CO.

12/23/70

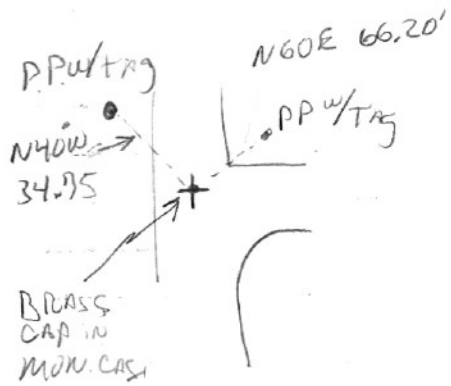
visited by HRC. 7/5/88 +
Found / established / new P.P. BT

(Tagged) N40°W 34.75' ALSO Fcl A P.P.

(Tagged) N60°E 66.20' COR IS
A BRASS CAP IN A MON. CASE
NEW PICTURE ON BACK

W.O. REF. _____

CARD 1 OF 1



Cor#505 ¼ cor 4/9 2N10E

HRC set 1 ¼" pipe over stone in 1961. Hrc replaced said pipe with brass cap in mon case in 1970. Cor fits JLH surveys in area.

LL0505
12/23/70

SET BRASS CAP IN
MONUMENT CASE

54
1/4 ——— | ———
59

T2N R10E

B.C. REPLACES 1 1/4" I.P.
IN INTERSECTION OF
BARRET ROAD & SUNSET
WAY

W.C. Brown