

SECTION OR SUBDIVISION 33

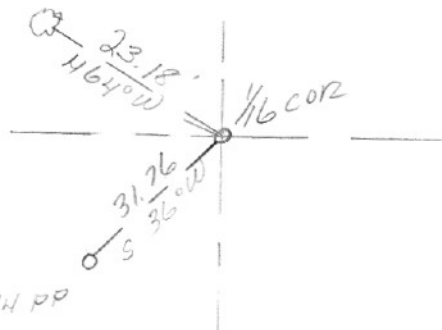
CORNER No. 494

TWP. 31, RANGE 10 E, W.M.

CORNER DESCRIPTION

RIP NAIL
IN 4" OAK

SE COR OF SW 1/4 OF
SE 1/4



BOLT ON TOP 2" LP
6" UNDER & PAVE

RIP
NAIL IN PP

REPLACED WITH BRASS CAP
IN MON CASE BY H.R.C.
12/21/70

W.O. REF. TENNESON # 4175

KELMBAH 11-13-70

CARD OF

C0494

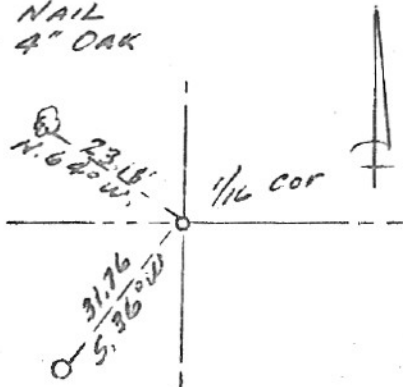
SECTION OR SUBDIVISION 33

CORNER No. 348

TWP. 3 N., RANGE 10 E., W.M.

CORNER DESCRIPTION

R.P. NAIL
IN 4" OAK



S.E. cor. of S.W. 1/4
of S.E. 1/4
Bolt on top 2" I.P.
6" under & Pave.

R.P.
NAIL IN P.P.

W.O. REF. 4175 Krumboltz

✓ CARD OF

CC0494

12/21/70

SET BRASS CAP IN
MONUMENT CASE

T3N
S $\frac{1}{16}$ $\frac{33}{4}$
N $\frac{1}{16}$ T2N

R10E

I.P. REMAINED IN PLACE
B.C. IS SET IN THE PIPE

WC Brown