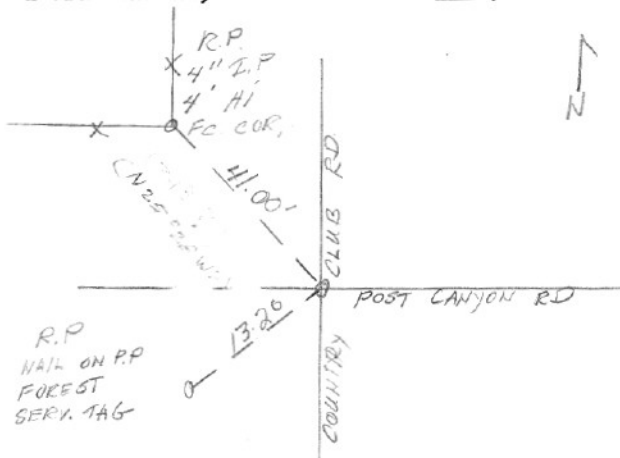


SECTION OR SUBDIVISION 33

CORNER No. 492

TWP. 311, RANGE 10 E, W.M.

CORNER DESCRIPTION



NE COR OF NW 1/4 OF
SE 1/4 SEC. R.R SPIKE

CORNER FOUND WAS R.R
SPIKE AT SURFACE OF PAVE-
MENT.

CORNER ACCEPTED WAS
R.R. SPIKE 4\"
SPIKE 0.4' N.E. THIS
WAS REPLACED BY BRASS
CAP IN MON. CASE BY H.R.CO.

W.O. REF. TELLESON #4175

CARD..... OF

0105 →

1980 RP'S

492

