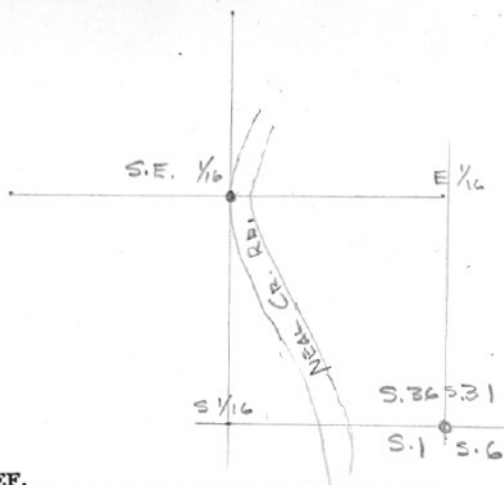


SECTION OR SUBDIVISION 36

CORNER No. 789

TWP. 2 N., RANGE 10 E., W.M.

CORNER DESCRIPTION



S.E. 1/16 COR.
SET 2" PIPE & 3" BRASS
CAP. IN ROAD DITCH ON
WEST EDGE OF NEAL
CREEK ROAD.
1970

W.O. REF. _____

CARD OF