

# LAND CORNER MONUMENT RECORD

INDEX FILE No. A5 USDA-FOREST SERVICE

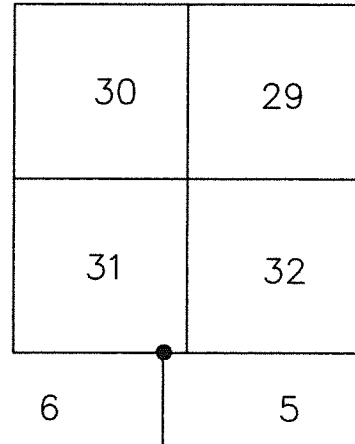
LOCATION

CC 459

R. 9 E.

HOOD RIVER COUNTY  
STATE OF OREGON  
WILLAMETTE MERIDIAN

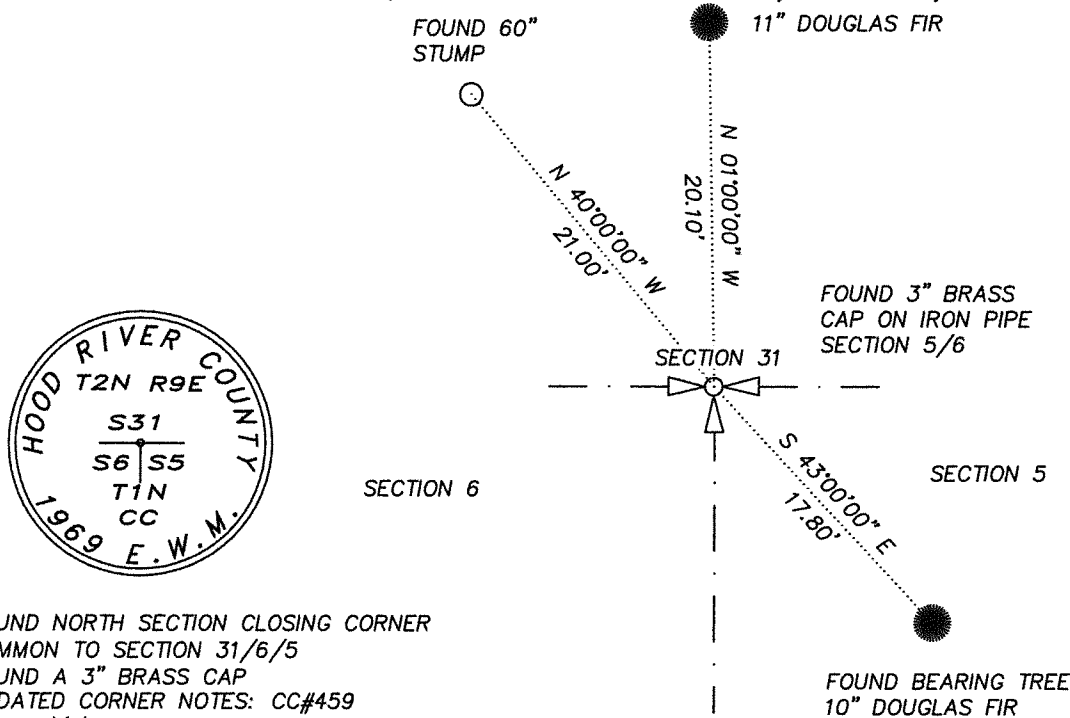
	6	5	4	3	2	1
	7	8	9	10	11	12
T.	18	17	16	15	14	13
2	19	20	21	22	23	24
N.	30	29	28	27	26	25
	31	32	33	34	35	36
T.	6	5				
1						
N.						



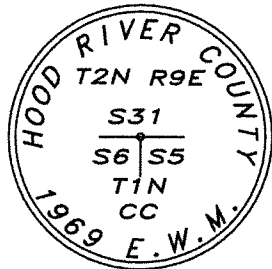
T. 1 N. TOWNSHIP 1 NORTH      RANGE 9 EAST      NORTH 5/6 CLOSING SECTION CORNER

TYPE OF MONUMENT; TIES TO BEARING TREES, OBJECTS, etc.

(SKETCH)



BASIS OF BEARING:  
COMPASS DECLINATION



FOUND NORTH SECTION CLOSING CORNER  
COMMON TO SECTION 31/6/5  
FOUND A 3" BRASS CAP  
UPDATED CORNER NOTES: CC#459  
From which

- A 60" Douglas Fir (existing BT) bears North 40°00' West a distance of 21.00' feet from Corner.
- An existing 'T' post bears in a mound of rocks bears South 90°00' West a distance of 4.0 feet from corner.
- A 11" Douglas Fir (new BT) bears North 01°00' West a distance of 20.10 feet. BT was blazed and painted with red band. Set washer and nail L.S. 72306
- A 10" Douglas Fir (new BT) bears South 43°00' East a distance of 17.8 feet. BT was blazed and painted with red band. Set washer and nail L.S. 72306

**REMARKS: ( History of Corner, etc. )**

11/24/1969 - CORNER WAS RESET BY HOOD RIVER COUNTY, CORNER CARD #459  
60" D.FIR STUMP MARKED S31CC BT, N31°W DISTANCE OF 19.5 FEET.  
OLD G. FREY 2" IRON PIPE WITH BRASS CAP., N 53°30'W A DISTANCE OF 27.5 FEET NOT FOUND  
50" D.FIR MARKED T1N R9E BT, N84°E  
18" HEMLOCK, S37°E, DISTANCE UNCLEAR  
10/1/13 CORNER VISITED-NEW BT'S (C.S.2013-053)  
6" FIR, S43°E-17.8 FEET  
6' STEEL FENCE POST W/TAG WEST-4.0 FEET.

DIRECTIONS TO CORNER: FROM INTERSECTION OF NF ROAD No. 2810 AND PUNCH BOWL ROAD TRAVEL WESTERLY ON 2810 APPROXIMATELY 7 MILES TO AN EVIDENT LOGGING CLEAR CUT LINE. CORNER IS APPROXIMATELY 600' NORTH OF ROAD, HEAD WEST ALONG NORTH SIDE OF CLEAR CUT TO LOG DECK AREA, FOLLOW SIDE SLOPE WEST TO CORNER.

GRID COORDINATES; ORGN; OREGON NORTH ZONE 3601, NAD 83(2011) EPOCH 2010.00

NORTHING	EASTING
709796.15	7887172.61

NAME: ERIK M. CARLSON

DATE: DECEMBER 1, 2021

TITLE: TERRA SURVEYING

REGISTRATION NO. OR PLS 72306

SECTION OR SUBDIVISION

 $\frac{31}{615}$ 

CORNER No. .... 45-9 .....

TWP. .... 1N ....., RANGE ..... 9 ..... E, W.M.

CORNER DESCRIPTION

5' O. FIR STUMP  
MKD S 31CG BTOLD G. FREY  
COR 2" DP  
W/BRASS  
CAPOLD FREY BT  
50" DPBARK SCRIBED  
TIN R9E BT18"  
HEMLOCKN 31° W  
19 E / 50°  
VAN 53 1/2° E  
27 1/2 / 26 VAN 84° E  
24° / 24°  
VAS 37 1/2° E  
77° / 100°  
VA

CORNER SET CR

BRASS CAP MKD

T2N R9E  
S 31

S 61 S 5

TIN

SET 11-24-69

HOOD RIVER COUNTY

W.O. REF. \_\_\_\_\_

CARD ..... OF .....