

SECTION OR SUBDIVISION 31

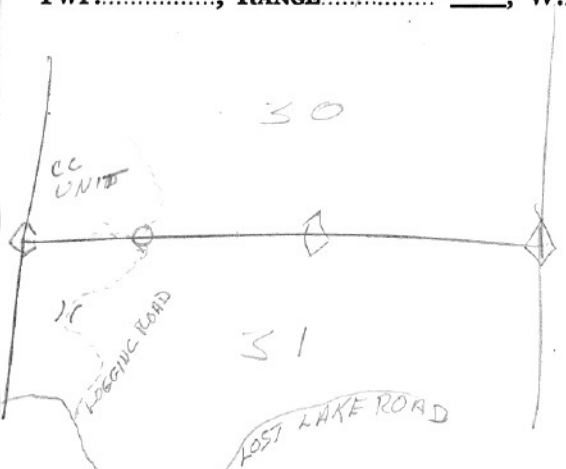
LOT COR ON N LINE  
NW 1/4 NW 1/4

CORNER No.

454

TWP. 1N, RANGE 9 E, W.M.

CORNER DESCRIPTION



COR IS I.P. IN MOUND  
OF ROCK WA SNAG W/  
X BLAZE 10' NORTH  
COR WAS REESTABLISHED  
BY COUNTY SURVEY CREW  
AFTER LOGGING FROM  
REFERENCES DO NOT  
KNOW HOW THE OREG.  
WAS SET OR BY WHO

W.O. REF.

CARD..... OF .....