

SECTION OR SUBDIVISION

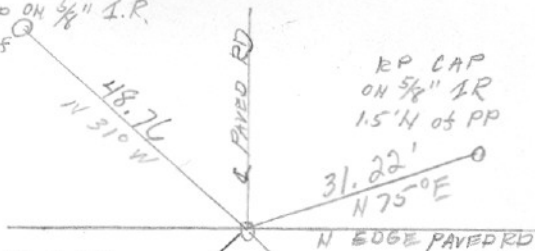
Sec 32 S 1/4

CORNER No.

439

TWP. 1 N, RANGE. 10 E, W.M.

CORNER DESCRIPTION

R.P. CAP ON 5/8" I.R.
1.5' S of
R.P.R.P. CAP
ON 5/8" I.R.
1.5' N of PP31.22'
N 75° E

N EDGE PAVED RD

R.P. CAP ON
5/8" I.R.
1.5' N of
SIGN POST40.49'
S 26° W36.57'
S 21° ER.P. CAP
ON 5/8" I.R.
1.5' E of PP

S 1/4 Sec 32

SET BRASS CAP

Y - 677,519.21

X 1,718,537.18

W.O. REF. _____

Tennessee 4027

CARD

OF