

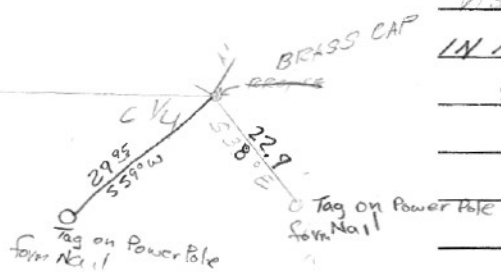
SECTION OR SUBDIVISION 34

CORNER No. 428

TWP. 31, RANGE 10 E, W.M.

CORNER DESCRIPTION

CENTER 1/4 COR. SEC. 34
 BRASS CAP
~~OR SPIKE IN PAVEMENT~~
 VISITED 11-70 JENNISON
 IN MONUMENT CASE
 5-76 H.R.C.



W.O. REF. JENNISON (296) # 4010

Y - 743, 742.01

X 1,730, 742.98

CARD 1 OF 2

SECTION OR SUBDIVISION

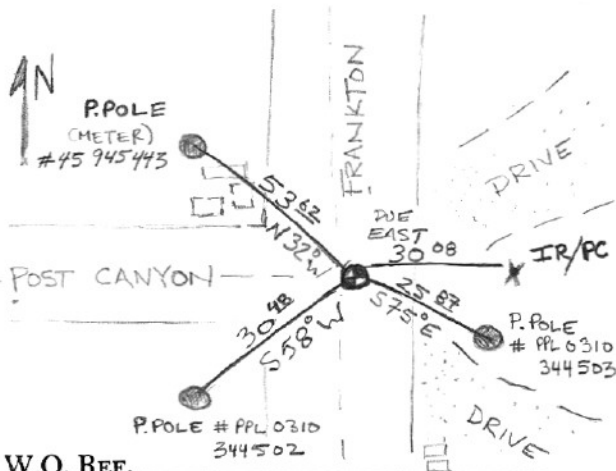
34

CORNER No.

428

TWP. 3N, RANGE 10E, W.M.

CORNER DESCRIPTION



FOUND AC PATCH AT
 BEARING/DISTANCE FROM SW
 P. POLE; SE POLE GONE.
 FOUND MONUMENT BOX
 AND BRASS CAP 2 8'
 BELOW AC; INSTALLED
 NEW MONUMENT BOX
 AND BRASS CAP -
 MARKED RP LOCATIONS
 8-25-00

W.O. REF.

2000 - 1 FIELD BOOK

CARD

2

OF

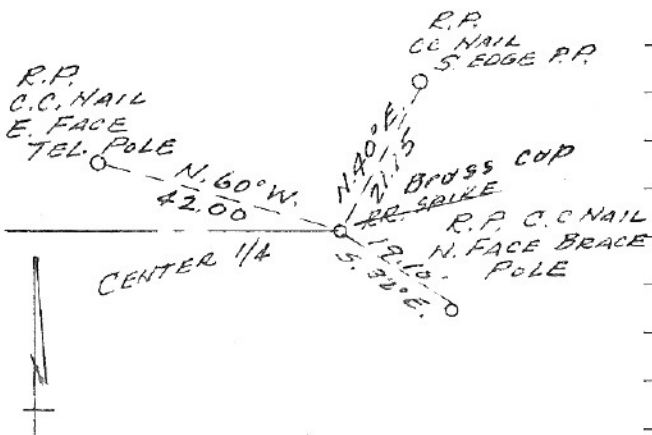
2

SECTION OR SUBDIVISION 34

CORNER No. 290 CC0428

TWP. 3 N., RANGE 10 E., W.M.

CORNER DESCRIPTION



Center $\frac{1}{4}$ Cor of
 Sec. 34.
 Brass cop
~~R.R. Spike in~~
 Pavement

4-613192.01
 2-1,730,342.98

W.O. REF. 4010 Bob Brown