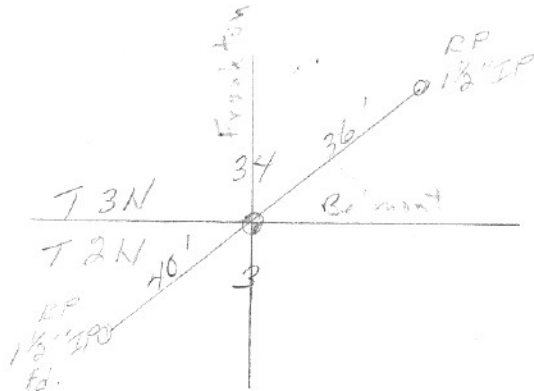


SECTION OR SUBDIVISION

 $\frac{34}{3}$ TWP. $\frac{3}{2}$, RANGE 10 E, W.M.

CORNER No. 426

CORNER DESCRIPTION

N 1/4 Sec 3, Fd I.P.

~~STONE~~ BRASS CAP

VISITED 11-70 TENNESON

REPLACED WITH BRASS

CAP IN MONUMENT CASE

By HRC.

R.P.'s were set
while orig. stone
was in place.

W.O. REF. TENNESON (21) 2595

Y - 740.553.01

X - 1,730.815.28

CARD OF

Cor #426 1/4 cor between 34/3 3N/2N 10E

HRC set brass cap in mon case in the early 1970's. Two 1 1/2" pipes (RP's) set by JLH while orig evidence still in place still there.

SECTION OR SUBDIVISION

3

CORNER No.

CC0426

777
~~777~~

TWP. 2 N, RANGE 10 E, W.M.

CORNER DESCRIPTION

Hood Riv. Co.

N. 1/4 Cor. Sec. 3



R.P.
1 1/2" I.P.

~~stone~~ Brass Cap

34 3/4'

T. 3 N.

From Hood River

T. 2 N.

R.P. 40' 3' Brass cap

County Engrs. Records.

1 1/2" I.P. ♂
fd.

4-740, 553.01

2-1,730, 915.28

W.O. REF.

2595 John F. Hoops.

CARD OF