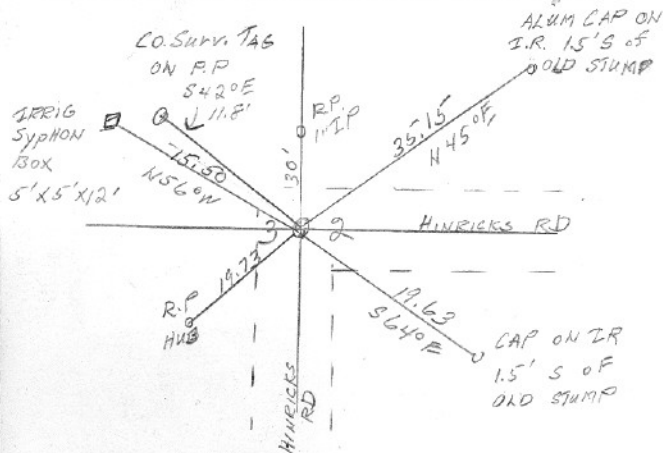


SECTION OR SUBDIVISION 3/2

CORNER No. 424

TWP. 2N, RANGE 10 E, W.M.

CORNER DESCRIPTION



1/4 3/2

2" T.P. IN CONC.

8-11-89

FD NE IR & SE IR
PRIOR to EXCAVATION

W.O. REF. TENNESON (18) #2595, #4030

Y 737,918.19

X 6,733,395.18

CARD OF

Cor#424 1/4cor between 2 and 3 2N10E

Cor is 2" IP. (JLH?) Henderson found Goit's stone and set a 2" pipe at same location, and also set two pipes for rp's. The rp 30' north of the corner was found in 1969 by tenneson. The 2" pipe fits the corners to the east, west and south reasonably well, but the distance to the sec cor to the north is about ten feet longer than JLH measured.