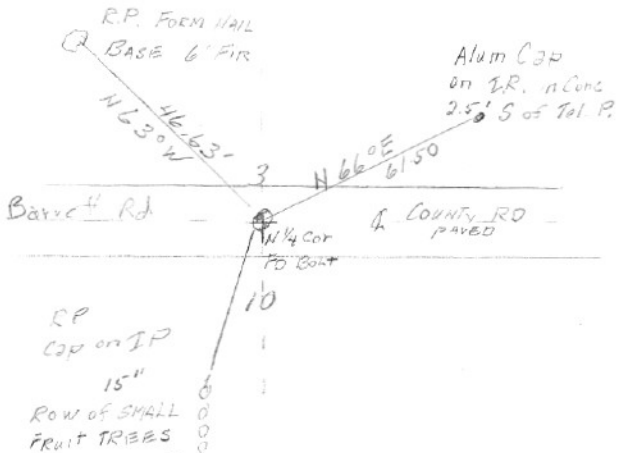


SECTION OR SUBDIVISION 3/10

CORNER No. 422

TWP. 2N, RANGE 10 E, W.M.

CORNER DESCRIPTION



N 1/4 Cor Sec 10

Ed Bolt

REPLACED WITH BRASS CAP

IN MON CASE BY H.R.C.

12/23/70

CARD 1 OF 2

SECTION OR SUBDIVISION

TWP. 2N, RANGE 10 E, W.M.CORNER NO. 422

CORNER DESCRIPTION



8/00 REMOVED; 6" A.C.,
INSTALLED RISERS TO
SURFACE, NEW R.P.'S
AS SHOWN; TRUE BRG'S,
DISTANCES TO E.g. R.P.,

W.O. REF. FLOBK: 2000-1

CARD

2

OF

2

Cor #422 ¼ cor 3/10 2N10E

HRC fd bolt in 1970 and remonumented with a brass cap in mon case. No GLO evidence, but corner fits sec cors to east and west pretty well.

CC0422

12/23/70

SET BRASS CAP IN
MONUMENT CASE

53

$\frac{1}{4}$ -

510

T2N R10E

B.C. REPLACES BOLT
IN PAVEMENT

W.C. Brown