

# LAND CORNER MONUMENT RECORD

INDEX FILE No. A15 *USDA-FOREST SERVICE*

LOCATION

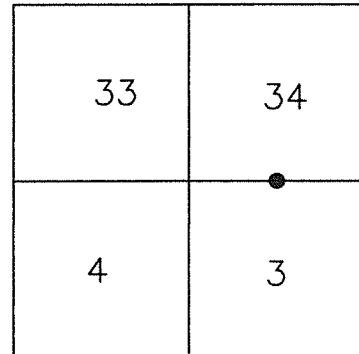
CC 397

R. 8 E.

HOOD RIVER COUNTY  
STATE OF OREGON  
WILLAMETTE MERIDIAN

T.  
2  
N.

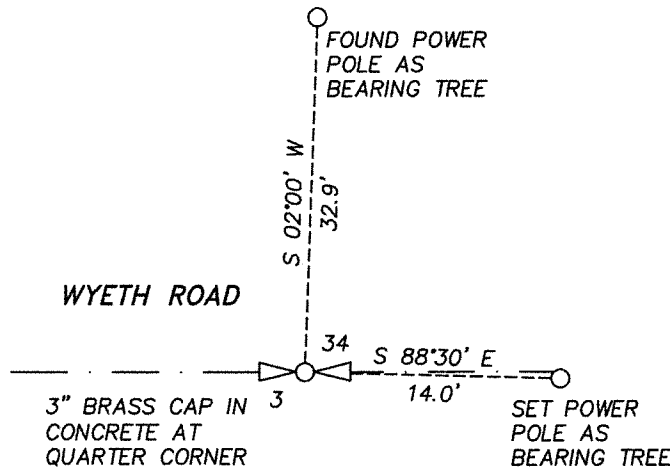
			●			
	6	5	4	3	2	1
	7	8	9	10	11	12
	18	17	16	15	14	13
	19	20	21	22	23	24
	30	29	28	27	26	25
	31	32	33	34	35	36



TOWNSHIP 2 NORTH      RANGE 8 EAST      SECTION 1/4 CORNER 4/33

TYPE OF MONUMENT; TIES TO BEARING TREES, OBJECTS, etc.

(SKETCH)



BASIS OF BEARING:  
COMPASS DECLINATION

REGISTERED  
PROFESSIONAL  
LAND SURVEYOR

OREGON  
December 30, 2005  
ERIK M. CARLSON  
72306

Found 3" U.S. Army Corps brass cap encased in concrete monumenting the Quarter corner (A-15) common to Section 34 and Section 3 of Township 2 North, Range 8 East.

Expires: December 31, 2023

Existing reference:

Power pole bears (mag) North 02° East, a distance of 32.9 feet. set tags and washer.

New reference:

Power pole with tags and washer bears (mag) South 88°30' East a distance of 14.0 feet.

REMARKS: ( History of Corner, etc. )

8/1935 - U.S.C.E. SET 3" BRASS MONUMENT IN CONCRETE, BONNEVILLE LANDS PROJECT, MAP 0-7-4 OHR  
5/25/1992 - 3" U.S.C.E. BRASS MONUMENT IN CONCRETE VISITED BY L.S. 2209, C.S.93070.

DIRECTIONS TO CORNER: FROM INTERSECTION OF SE FRONTAGE ROAD AND WYETH ROAD HEAD EASTERLY ON WYETH ROAD APPROXIMATELY 1.6 MILES. CORNER MONUMENT IS ON THE SOUTH SIDE OF THE ROAD APPROXIMATELY 40 FEET INTO THE WOODS.

NAME: ERIK M. CARLSON

DATE: JULY 20, 2022

TITLE: TERRA SURVEYING

REGISTRATION NO. OR PLS 72306

SECTION OR SUBDIVISION

34

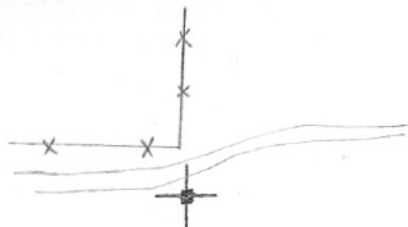
3

CORNER No. ....

397

TWP. 2N, RANGE 8E, W.M.

CORNER DESCRIPTION



1/4 Cor.  
Brass cap in conc.  
block set by Corps  
of Engr.

A land owner in the  
area that the cor.  
was on the N. side  
of the rd. instead  
of in its present  
location

W.O. REF. \_\_\_\_\_

CARD.....

1

OF

2

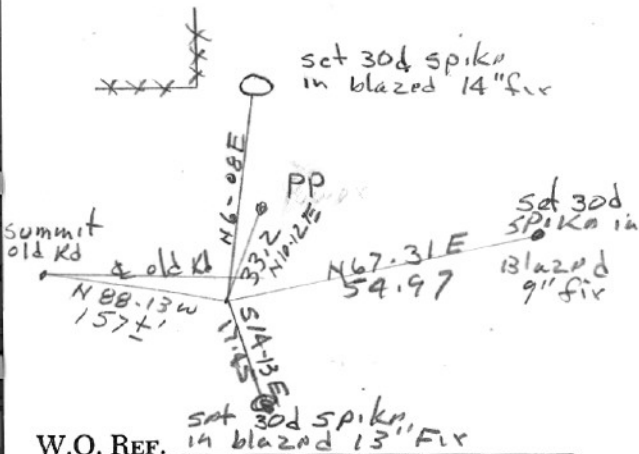
SECTION OR SUBDIVISION

34  
3

CORNER No. 397

TWP. 2 N., RANGE 8 E., W.M.

CORNER DESCRIPTION



1/4 Cox  
 US Army Corps  
 of Eng. Conc.  
 Mon with Brass  
 Cap. Referenced  
 by Clair Pence  
 April 1976  
 See survey File #  
 7656

W.O. REF. \_\_\_\_\_

CARD 2 OF 2