

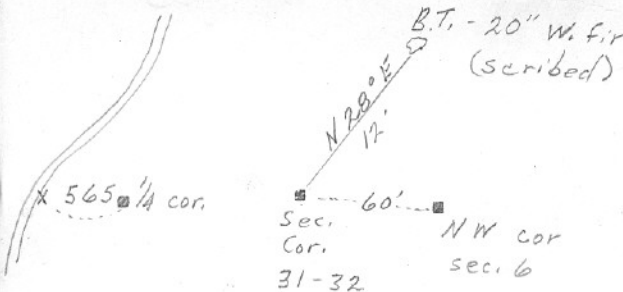
SECTION OR SUBDIVISION

31 | 32

CORNER No. 381

TWP. 1 N, RANGE. 11 E _____, W.M.

CORNER DESCRIPTION



Sec. Cor
Rock & stake - 2x2x24
in mound of rock
fd. by V.R.E. 5-5-45
(X) - Sec. line marker
on tree on old Fir Rd.

W.O. REF. _____

CARD OF

HOOD RIVER COUNTY CORNER RESTORATION FORM

Section: 31/32 Township: 1 N Range: 11 E Date: 5/29/24
Corner Designation Z5

- Condition Report Only
- Not Found
- Renewed
- Unrecorded
- Surveyed In
- Referenced Out

Previous Renewals/Surveys, etc:

(1859) The U.S. General Land Office contracted with David P. Thompson, Deputy Surveyor, under contract No. 79, to survey the Baseline from the southeast corner of section 32 in T1N R8E to the southeast corner of T1N R32E, conducted May 21, 1859 through June 8, 1859. Thompson "set post for corner to Secs 31 & 32." References set:

- 6" fir, N68W 40 links
- 24" fir, N30E 43 links

(1882) The U.S. General Land Office contracted with Henry Meldrum, Deputy Surveyor, under contract No. 436, on April 26, 1882 to subdivide T1N R10E, conducted in November of 1882. Meldrum found Thompson's work through R11E to be out of specifications and therefore resurveyed the Baseline. For the corner to sections 31 and 32 Meldrum set a basalt stone, 10"x10"x7", firmly in ground, marked with 5 notches on East and 1 on West edges with "BL" on North face. References set:

- 20" Fir, N18W, 17 links, scribed "T1N R11E S31 BL"
- 10" Pine, N59E, 30 links, scribed "T1N R11E S32 BL"

(1945) Corner found by V.B.E, US Forest Service Corner Card No. 381, as "rock and stake-2x2x24 in mound of rock". References found: -20" White fir, N28E, 12', scribed. (no note what was scribed).

(1965) Government Land Office surveyor J.E. Jelley, remonumented certain original corners along the north, east and west boundaries and subdivisional lines. Jelley set 2.5" iron post, 28" long, 24" in ground and mound of stone, 2.5' base, w/brass cap marked "T1N R11E S31 S32/S1 T1S R10E 1965" and set old stone alongside iron post. Forestry and Engineer Technicians E. E. Carpenter and M. W. Challee initially recovered corner in 1962 as follows:

- 7"x10"x4" stone, above ground 7"x7"x4", in poor condition, marked "BL" N face, 1 notch W, 5 notches E. References found: -19" White fir, N59E, 19', "T1N R11E S32"
- Rotted stub, N18W, 10.5'

References set:

- 12" White fir, N39-15-00E, 41.5 links marked "T1N R11E S31 BT"
- 7" White fir, N44-30-W, 17.5 links marked "T1N R11E S31 BT"

(1968) Gerald E. Chittick, Cadastral Surveyor, under Group Number 670, for the Bureau of Land Management conducted a resurvey of a portion of the Willamette Base Line, T1S R11E, from June 1978 to July 1972. At the section corner of sections 31 and 32 only, he found an iron post, 2.5", firmly set, protruding 6" above ground, with brass cap marked as described in 1965 remonumentation record. References found:

- 19" white fir, N60-30E, 30 links, marked T1N R11E S32 on partially healed blaze. (1882 bearing tree)
- 19" fir stump, N15W, 17 links, no marks visible (1882 bearing tree)
- 12" white fir, N39-15E, 41.5 links, marked T1N R11E S32 BT, on an open blaze. (1965 tree)
- 7" white fir, N44-30W, 17.5 links, marked T1N R11E S31 BT, on an open blaze. (1965 tree)

(1976) US Forest Service Techs M. Mihacsi and G. Andrews visited corner, consisting of iron pipe w/brass BLM cap, scribed "T1N R11E Cor Sec 31 & 32" References found:

- 15" Grand fir, S60W, 20'
- 10" Grand fir, S44E, 11.5'

(1991) C. E. Whitten, Oregon LS #978, conducting field work for Hagedorn, Inc, on April 24, 1991, found 2.5" iron pipe with 1965 BLM brass cap on the South side of a 20" fir stub with carsonite post .2' North of monument. References found:

- 21" White fir, N60-30-00E, 20.9', with scribe visible on open blaze (1882 BT)
- 14" White fir, N38E, 27.7', with healed blaze (1965 BT)
- 11" White fir, N44-30-00W, 11.5', with healed blaze (1965 BT)

References Set:

- 17" White fir, N02-30E, 19', scribed "T1N R11E S32 BT" and brass washer marked "978" tacked in lower half of scribed "B."

Monument(s) & Accessories Found: (Condition and Source)

(2024) S. Deshong of US Forest Service, Columbia Land Zone recovered corner monument as set in 1965. References found:

- 19" white fir, N44-30W, w/healed blaze and Bearing Tree/Land Survey Monument signs attached
- 25" white fir, N2-30E, w/healed blaze and Bearing Tree/Land Survey Monument signs attached
- Rotted snag, N38E, 27.7', w/1965 Bearing Tree and Land Survey Monument signs attached
- Orig. 1882 24" white fir stump, 5' tall, w/aluminum nail hanging on right side of blaze face
- 21" rotted fir stump, N78E, 38.2' w/visible hack marks at blaze face

Monument Detail:

3.25" Brass cap on 2.5" iron pipe, 2" above ground, in 2'x2' mound of stone.

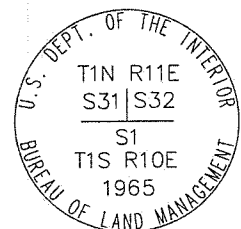
Monument Set (Procedures and Description):

None

New Accessories:

- 13" Red fir, S28W, 27.33', marked "T1SR10ES1BT" w/2" brass washer attached left side center, 0.9' high
- 20" Red fir, S51E, 29.12', marked "T1SR10ES1BT" w/2" brass washer attached right side center, 1.1' high

Sketch



Location & Comments:

-Corner lies approximately 50' West of corner to S32, S1 and S6 and approx 70' West of communication tower road.

Compass Declination _____

Firm/Agency USDA Forest Service
Gifford Pinchot National Forest, Columbia Lands Zone

Address 987 McClellan Road
Vancouver, WA 98661

Party Chief S. Deshong

Notes _____

Witness R. Ellis, C. Clark

Surveyor's Seal

