

SECTION OR SUBDIVISION

$\frac{5}{8}$

CORNER No. 374

TWP. 1 N, RANGE 11 E, W.M.

CORNER DESCRIPTION

FD. FIR POST IN MD. OF ROCK
AS COR., FD. REF. TAG, COUNTY
FOREST BOUNDRY SIGNS, + USFS
COR. REF. SIGN ON 40" PINE 30'
SW. REPLACED POST W/BRASS
CAP SET IN 8"x5" CEMENT CYLINDER
ON REBAR STUCCO IN GRD. SET
2 NEW BTS. W/TAGS + BLAZES.
(5-78)

571 W
30'



40" PINE
REF. TAG

W.O. REF. _____

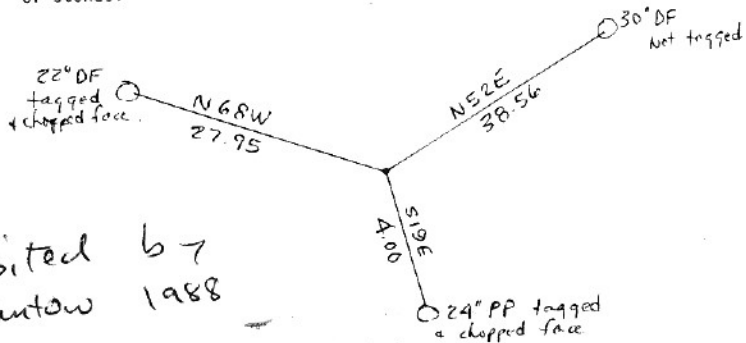
OVER →

CARD 2 OF 2

TYPE OF MONUMENT; TIES TO BEARING TREES, OBJECTS, etc.-

(SKETCH)

Found Hood River County brass cap set in concrete, in good condition, in a mound of stones.



visited by
Trantow 1988

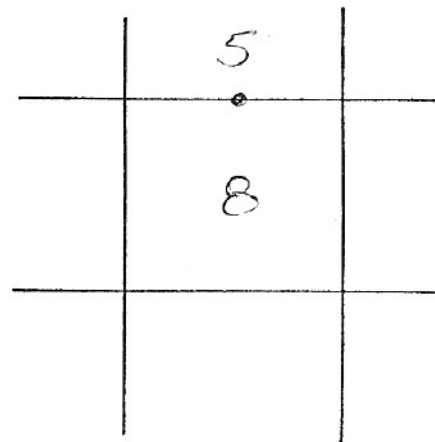
(Bk. 2, Page 5 of Trantow field notes)

CC0374

LAND CORNER MONUMENT RECORD

LOCATION

| | | | | | | | |
|--|----|----|----|----|----|----|--|
| | | | | | | | |
| | 6 | 5 | 4 | 3 | 2 | 1 | |
| | 7 | 8 | 9 | 10 | 11 | 12 | |
| | 18 | 17 | 16 | 15 | 14 | 13 | |
| | 19 | 20 | 21 | 22 | 23 | 24 | |
| | 30 | 29 | 28 | 27 | 26 | 25 | |
| | 31 | 32 | 33 | 34 | 35 | 36 | |
| | | | | | | | |

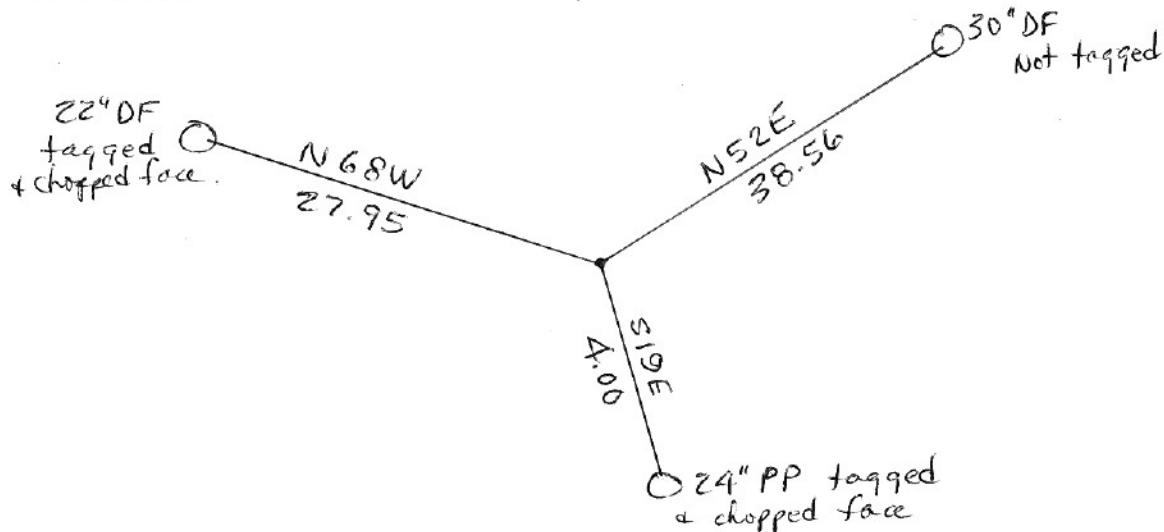


TOWNSHIP 1 North RANGE 11 East SECTION 8

TYPE OF MONUMENT; TIES TO BEARING TREES, OBJECTS, etc.

(SKETCH)

Found Hood River County brass cap set in concrete, in good condition, in a mound of stones.



(Bk.2, Page 5 of Trantow field notes)

REMARKS: (History of corner, etc.)

See corner card #374.

REGISTERED
PROFESSIONAL
LAND SURVEYOR

Terry N. Trantow

OREGON
DEC. 15, 1978
TERRY N. TRANTOW
1799

NAME *Terry N. Trantow*

TITLE LS 1799

DATE 2 February 1989