

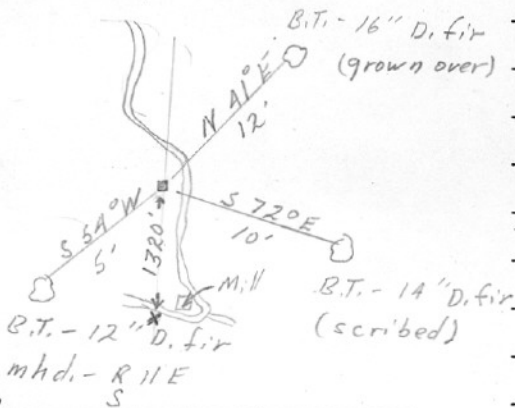
SECTION OR SUBDIVISION

8 | 9
17 | 16

CORNER No. 371

TWP. 1 N., RANGE 11 E., W.M.

CORNER DESCRIPTION



W.O. REF.

Sec. Cor.
 Stake 2x2x30
 fcl. by V.R.E.
 1946
 Sec. line marker at (X)
 on tree along along
 Duralls Rd.

CARD OF

CC 371

HOOD RIVER COUNTY RESTORATION FORM

Section: 16 Township: 1N Range: 11E DATE: 6/27/13

CORNER DESIGNATION
NORTHWEST SECTION CORNER

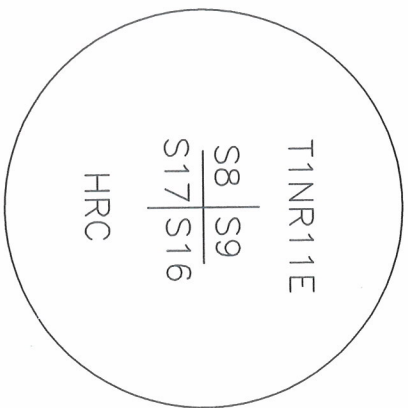
- Condition Report Only
- Not Found
- Renewed
- Unrecorded
- Surveyed In
- Referenced Out

Previous Renewals/Surveys, etc. US DEPUTY SURVEYOR HENRY MELDRUM CONTRACT NO. 436 DATED APRIL 26, 1882 SUBDIVIDED THIS TOWNSHIP NOV. 1ST THROUGH THE 10TH, 1882; HOOD RIVER COUNTY CORNER CARD NO. 371, AND NO. 450-A; CS 85086; CS 2001 043

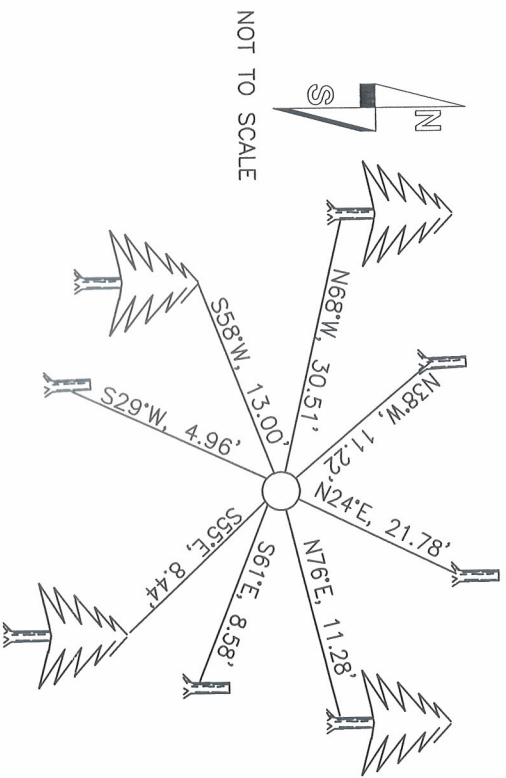
Monument(s) & Accessories Found: (Condition and Source)

FOUND 2" IRON PIPE WITH 2" ALUMINUM CAP; 0.4' ABOVE GROUND; STEEL FENCE POST 0.3' SOUTH; (OBT) N24°E, 20.43' ROTTED REMAINS W/AXE MARK; (OBT) S61°E, 8.58' SNAG REMAINS OF HIGH STUMP WITH VISIBLE SCRIBING; (OBT) S29°W, 4.96' HIGH STUMP WITH VISIBLE SCRIBING; (OBT) N38°W, 11.22' MOUND OF RUBBLE; REFERENCES FROM CORNER CARD NO. 450-A ALL INTACT AS DESCRIBED HOWEVER, NAILS ARE GROWN OVER.

Monument Detail



Sketch



Monument Set (Procedures and Description)

NO NEW MONUMENT SET

New Accessories

NEW ACCESSORIES WERE ESTABLISHED WITH A SILVA HAND COMPASS AND BEARINGS ARE REPORTED TO THE NEAREST DEGREE DISTANCES WERE MEASURED TO A SPIKE AT SIDE CENTER WITH A STEEL BUCKERS TAPE

NEW REFERENCES:
10" FIR SCRIBED "T1N R11E S9 RP" N76°E, 11.28' SIDE CENTER
14" FIR SCRIBED "T1N R11E S16 RP" S55°E, 8.44' SIDE CENTER
8" FIR SCRIBED "T1N R11E S17 RP" S58°E, 13.00' SIDE CENTER
8" FIR SCRIBED "T1N R11E S8 RP" N68°W, 30.51' SIDE CENTER

Location & Comments

Compass Declination 18' EAST

Surveyors Seal

Firm/Agency LONGVIEW TIMBER CORP.

Address 10 INTERNATIONAL WAY
LONGVIEW, WA 98632

Party Chief DAVID L SIMES

Notes DAVID L SIMES

Witness TOBY CROSS

REGISTERED
PROFESSIONAL
LAND SURVEYOR

John L. Simes 6-27-13
OREGON
NOVEMBER 10, 2009
JASON L. SIMES
833256PLS

Renews 6-30-2014