

SECTION OR SUBDIVISION

SW of 10

CORNER No.

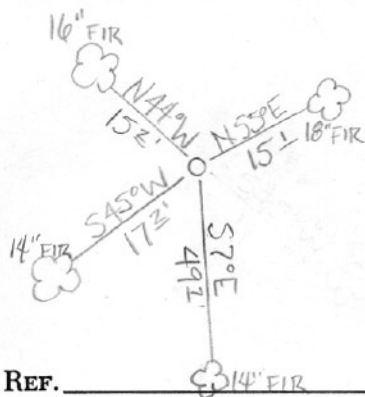
362

TWP.....IN....., RANGE.....II..... E, W.M.

CORNER DESCRIPTION

FR. COR AS DESCRIBED.

HRC-LS, 5/78



W.O. REF.

CARD

3

OF

3

CC 362

HOOD RIVER COUNTY RESTORATION FORM

Section: 16 Township: 1N Range: 11E DATE: 6/27/13

CORNER DESIGNATION  
NORTHEAST SECTION CORNER

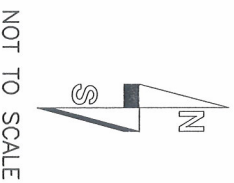
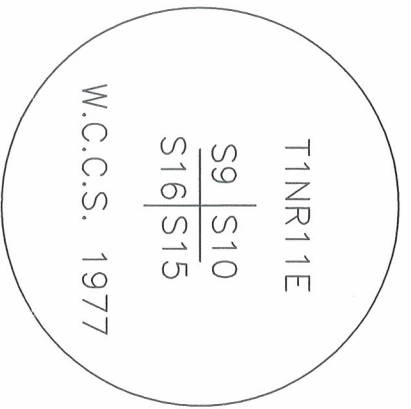
- Condition Report Only
- Not Found
- Renewed
- Unrecorded
- Surveyed In
- Referenced Out

Previous Renewals/Surveys, etc. US DEPUTY SURVEYOR HENRY MELDRUM CONTRACT NO. 436 DATED APRIL 26, 1882 SUBDIVIDED THIS TOWNSHIP NOV. 1ST THROUGH THE 10TH, 1882; HOOD RIVER COUNTY CORNER CARD NO. 362

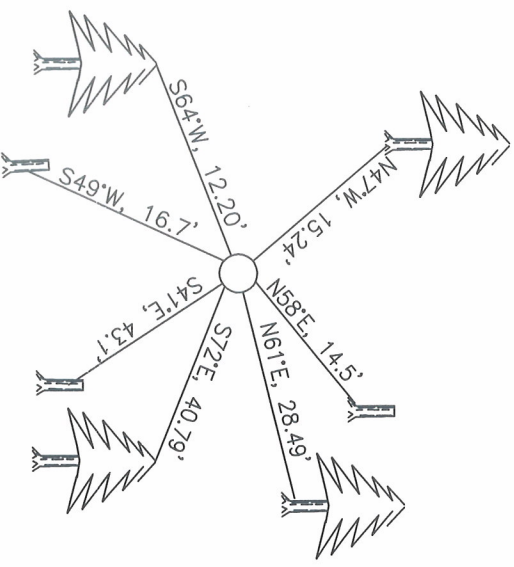
Monument(s) & Accessories Found: (Condition and Source)

FOUND 1" IRON PIPE WITH 3" BRASS CAP; 0.9' ABOVE GROUND WITH BASALT STONE OF APPROXIMATE GLO DIMENSIONS (NO MARKS) LYING ON NORTH SIDE; (OBT) N58°E, 14.5' ROTTED REMAINS; (OBT) S41°E, 43.1' STUMP WITH VISIBLE SCRIBING; (OBT) S49°W, 16.7' SNAG WITH VISIBLE SCRIBING; (OBT) N47°W, 15.2' 20" GREEN FIR WITH OVERGROWN FACE PREVIOUSLY CHOPPED OUT BY OTHERS; REFERENCES FROM CORNER CARD NO. 362 ALL INTACT AS DESCRIBED.

Monument Detail



Sketch



Monument Set (Procedures and Description)

NO NEW MONUMENT SET

New Accessories

NEW ACCESSORIES WERE ESTABLISHED WITH A SILVA HAND COMPASS AND BEARINGS ARE REPORTED TO THE NEAREST DEGREE DISTANCES WERE MEASURED TO A SPIKE AT SIDE CENTER WITH A STEEL BUCKERS TAPE

- NEW REFERENCES:
- 8" WHITE FIR SCRIBED "T1N R11E S10 RP" N61°E, 28.49' SIDE CENTER
- 6" PINE SCRIBED "T1N R11E S15 RP" S72°E, 40.79' SIDE CENTER
- 16" FIR SCRIBED "T1N R11E S16 RP" S64°E, 12.20' SIDE CENTER
- 20" FIR (OBT) DID NOT SCRIBE: N47°W, 15.24' SIDE CENTER
- SET STEEL FENCE POST SOUTH, 1.0'

Location & Comments

Compass Declination 18' EAST

Surveyors Seal

Firm/Agency LONGVIEW TIMBER CORP.

Address 10 INTERNATIONAL WAY  
LONGVIEW, WA 98632

Party Chief DAVID L SIMES

Notes DAVID L SIMES

Witness JASON HARPER  
COLEY CAMPBELL

**REGISTERED  
PROFESSIONAL  
LAND SURVEYOR**

*John L. Simes*  
OREGON  
NOVEMBER 10, 2009  
JASON L. SIMES  
83256PLS

Renews 6-30-2014