

SECTION OR SUBDIVISION 5 / 4

CORNER No. 348

TWP. 2N, RANGE 11 E, W.M.

CORNER DESCRIPTION

2 OAK STAKS & ROCK

OAK 16" E 4'

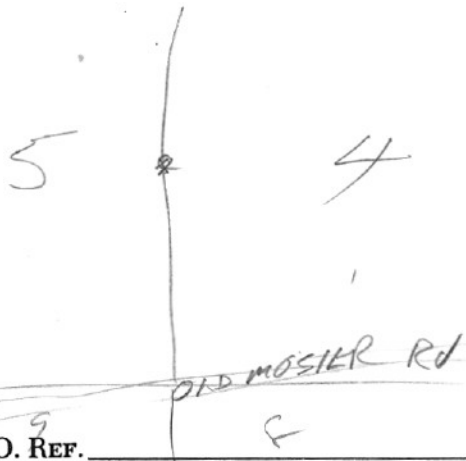
1953 V.B.K.

NOTE: BPA set

2 1/4" IP in 1931.

Peoples hd. said pipe
in 1991. & set 3" AL

Cap on pipe.



W.O. REF. S

CS# 91074

CS# 99120

CARD OF