

SECTION OR SUBDIVISION

$\frac{23/24}{26/25}$

CORNER No.

315

TWP. 1N, RANGE 10 E., W.M.

CORNER DESCRIPTION

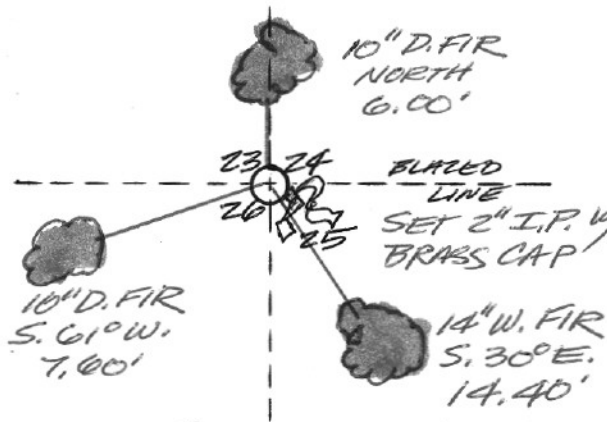
SECTION CORNER

COMMON TO,

23, 24, 24 & 25

SET $\frac{1}{2}$ " IRON PIPE

& BRASS CAP.



10" D. FIR
NORTH
6.00'

23 24

BLAZED
LINE

20 25

SET 2" I.P. W/
BRASS CAP

10" D. FIR
S. 61° W.
7.00'

14" W. FIR
S. 30° E.
14.40'

W.O. REF. CORNER IS \approx 250'

NORTH OF CLEAR CUT

FIELD BOOK 385

CARD

1

OF

2

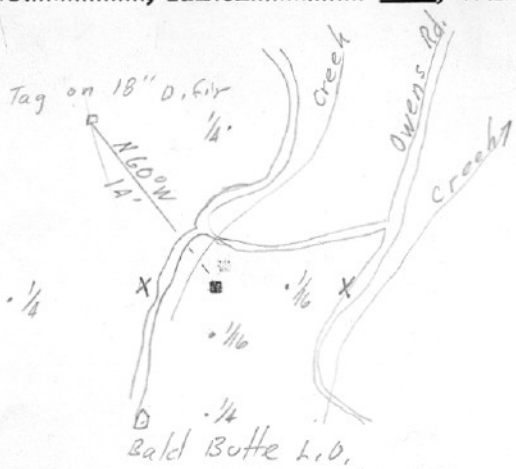
SECTION OR SUBDIVISION

$\frac{-23}{26} \mid \frac{24}{25}$

CORNER No. 315

TWP. ... 1N, RANGE ... 10 E, W.M.

CORNER DESCRIPTION



Sec. Cor

Stake + rocks

No R.T.s

location approx.
correct according to
fd. by V.R.E - 1950
sec. line markers as
indicated by (x) - no
distances recorded

W.O. REF. _____

CARD ... 2 ... OF ... 2 ...