

SECTION OR SUBDIVISION

36

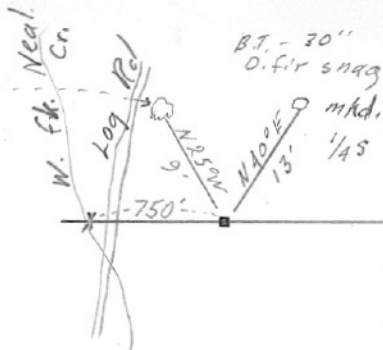
CORNER No.

233

TWP. 1 N., RANGE 10 E., W.M.

CORNER DESCRIPTION

B.T. - 18" D. fir
(down)
mhd. 1/4 S



1/4 Cor

Stone 10" x 12" x 16"

mhd. 1/4 in mound
of stone

Ed. by V.R.E. 9-16-47

x indicates tag on 6"
alder, E. side Neal Cr.

Just past Hanel's last
landing + on his logging
area

W.O. REF.

CARD

OF

HOOD RIVER COUNTY CORNER RESTORATION FORM

Section: 36 Township: 1 N Range: 10E

Date: 5/30/24

Corner Designation Z23

- Condition Report Only
- Not Found
- Renewed
- Unrecorded
- Surveyed In
- Referenced Out

Previous Renewals/Surveys, etc:

(1859)The U.S. General Land Office contracted with David P. Thompson, Deputy Surveyor, under contract No. 79, to survey the Baseline from the southeast corner of section 32 in T1N R8E to the southeast corner of T1N R32E, conducted May 21, 1859 through June 8, 1859. Thompson surveyed east along the south boundary of Sec 36 and "set post for 1/4 sec corner" at 40 chains. Set references:

- 15" Fir, N33W, 17 links
- 20" Fir, N25E, 20 links

(1947) Corner recovered by V.B.E., U.S. Forest Service corner card No. 223. Found 10"x12"x16" stone marked "1/4" in mound of stone. Found references:

- 18" D. Fir, down, N25W, 9', marked "1/4S"
- 30" D.Fir snag N40E 13' marked "1/4S"

(1984) Danny Cron, under contract with the U.S. Forest Service, CS1985036, performed field work in the fall of 1984. Cron set a 2"x30" pipe, with 3" aluminum cap, stamped "T1NR10E 1/4 S36/S2 AP T1SR10E 1984 PLS1028". Found references:

- Stump of 15" D.F. N33W 11.22', healed face
- Stump of 20"D.F. N25E 13.2', healed blaze

Set references:

- 8" White Fir N62E 16.8', scribed "1/4S36BT"
- 9" White Fir West 16.2' scribed "1/4S36BT"

Set Bearing Tree and Attention signs and 6" red band on Bearing Trees and brass disc stamped "LS1028" at bottom of blaze.

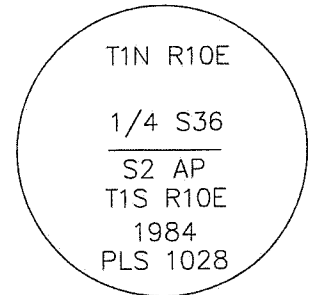
(1994)Raymond Smith, under contract with the U.S. Forest Service, CS1994132, recovered corner and found 3" aluminum cap set from original bearing trees per survey No 85036.

Monuments & Accessories Found:

(2024) S. Deshong of US Forest Service, Columbia Land Zone recovered 1/4 corner monument as set in 1984. References found:

- 14" Grand fir, N62E, 16.8' with healed blaze
- 20"doug fir stump, N25E, 13.2', with visible scribing.
- 9"fir, dead/down/rotted, 16.2' west with Land Survey Monument sign attached
- unrecorded 22" fir snag, S10E, 23.15', posted by B.Hess in 2008
- 15" doug fir stump, rotted, N33W, 11.22', with healed blaze and Land Survey Monument sign attached

Sketch



Monument Detail

Found 3" alum cap on 2.5" aluminum pipe, 1" high in a collar of stone.

New Accessories:

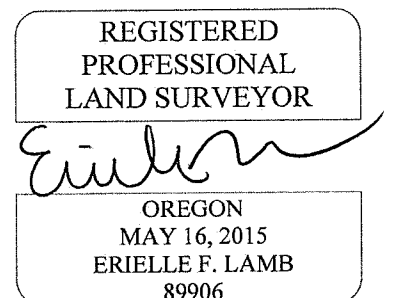
- 7" grand fir, 9.41', S42W, scribed "X BT" w/2" brass washer on right side center, 0.7' high
- 5" grand fir, 11.83', S50E, bark scribed "X" w/2" brass washer on right side center, 0.5' high
- 5" grand fir, 38.77', N35W, bark scribed "X" w/2"brass washer on right side center, .85'high

Location & Comments:

- Corner lies near the eastern rim of the west fork of Neal creek and approx 700' East of the 17 road
- Set aluminum guard posts 5' east and west of monument w/Land Survey Monument and Property Boundary signs attached
- Painted 6" red bands around Bearing Trees

Compass Declination _____
 Firm/Agency USDA Forest Service
Gifford Pinchot National Forest, Columbia Lands Zone
 Address 987 McClellan Road
Vancouver, WA 98661
 Party Chief S. Deshong
 Notes _____
 Witness R. Ellis, C. Clark

Surveyor's Seal



EXPIRES: 12/31/2024