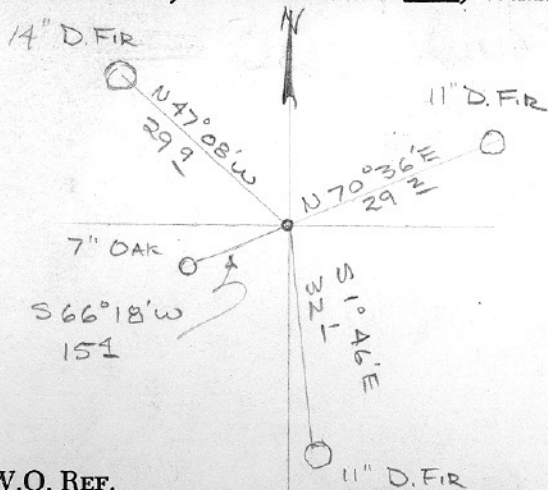


SECTION OR SUBDIVISION S.E. COR SEC. 36 CORNER No. 230

TWP. 142 N., RANGE 1011 E., W.M.



W.O. REF. _____

5-7-70 GRAHAM-LESSELYOUNG.

CORNER DESCRIPTION

REPLACED FD. STONE
WITH 30" GALVANIZED
IRON PIPE 2" IN DIA. &
BRASS DISK MARKED;

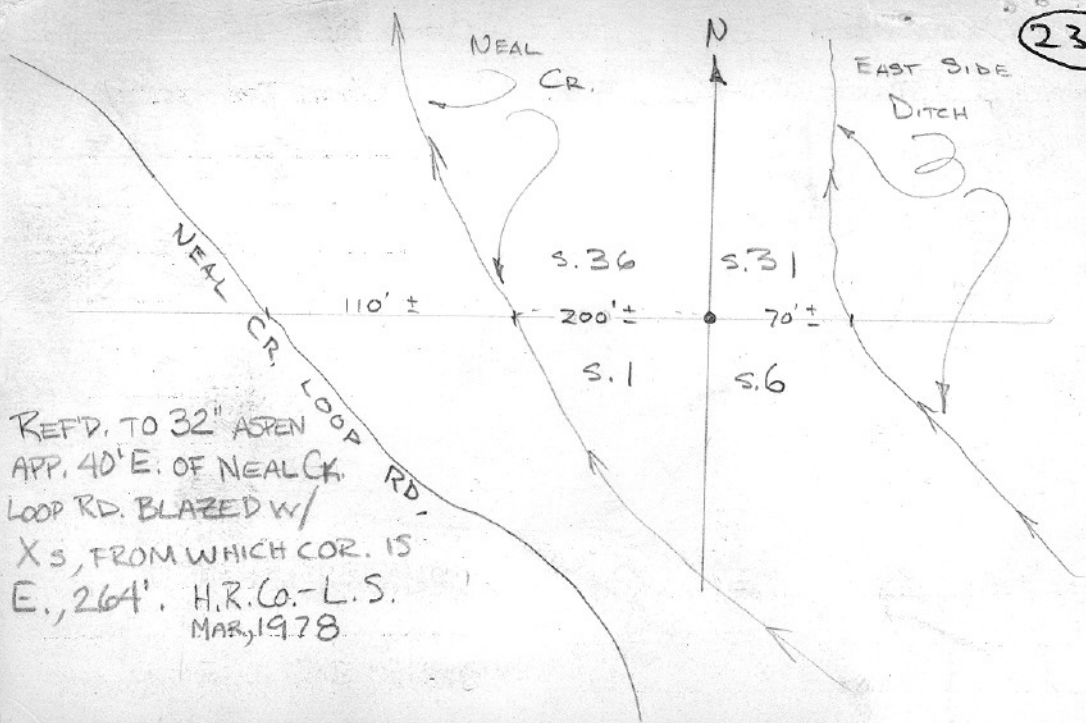
TRW	
RIDE	RITE
36	31
1	6
TIN	

NEW B.T.'S AS SHOWN.

SEE BACK FOR SKETCH

CARD 1 OF 2

230



REF'D. TO 32" ASPEN
 APP. 40' E. OF NEAL CR.
 LOOP RD. BLAZED W/
 X'S, FROM WHICH COR. IS
 E., 264'. H.R. CO. - L.S.
 MAR, 1978

SECTION OR SUBDIVISION

CORNER No. 230

TWP. 142 N, RANGE 104 11 E, W.M.

CORNER DESCRIPTION

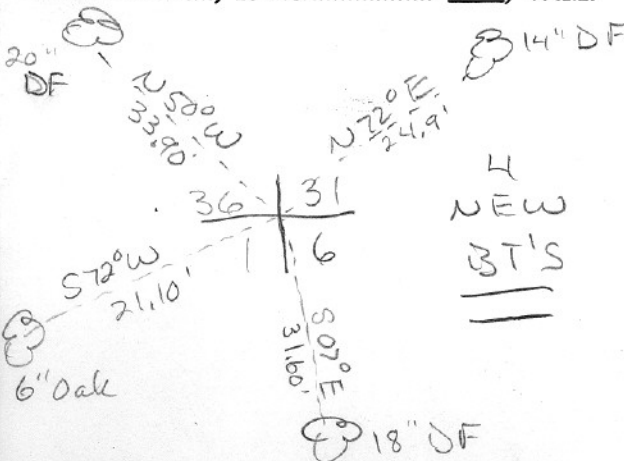
Oct. 1983

Found all four orig BT'S. Scribing found on SE & SW stamps.

NE stamp chopped out by J.L.H. NW stamp rotted away.

We moved I.P. set by HRC in 1970 5.65' east. We intersected all 4 distances and they all fell

CARD 2 OF 2 (over)



4
NEW
BT'S

W.O. REF. _____

within a foot. J.L.H. had bound
all four trees (circa 1910) and said
the distances were good but he did
not check the bearings. We therefore
ignored the bearings and used the
distances only.

Dick Arnold
Co. Surveyor
1983

230