

SECTION OR SUBDIVISION

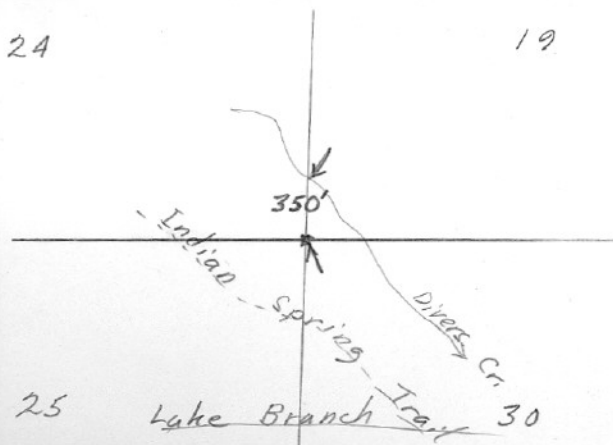
CORNER No. 207

TWP. 1N, RANGE 8, 9E, W.M.

CORNER DESCRIPTION

24

19



25 Lake Branch Trail 30

W.O. REF. _____

See back

Sec. Cor
10" x 10" x 8" rock
R.T.S - 24" D. Fir stump;
N.W. 15' mhd. T1N R9E
S 24 BT ; 20" down W.
Fir SW 6' mhd. T-S-B.T.;
12" down W. Fir SE 10' ;
mhd T1N - R9E - S30 - B.T.
Fd. by V.B.E. 4/17/44

CARD OF
00612 →

207

207



MMD.
 5" Corner N89E 44.8' scribbled TIN RBE 519
 6" Wh. Fix 57E 32.1' " TIN RBE 530
 8" Wh. Fix 570W 19.0' " TIN RBE 525
 8" Homloch N22W 36.3' " TIN RBE 524

↖
 From Bishop Survey
 # 80091

Follow Ore. Lum. Co. log rd. to boundary
 line mark - follow marked line S. to corner
 BTs in bad condition