

SECTION OR SUBDIVISION

18

CORNER No.

204

TWP.....N....., RANGE.....9E....., W.M.

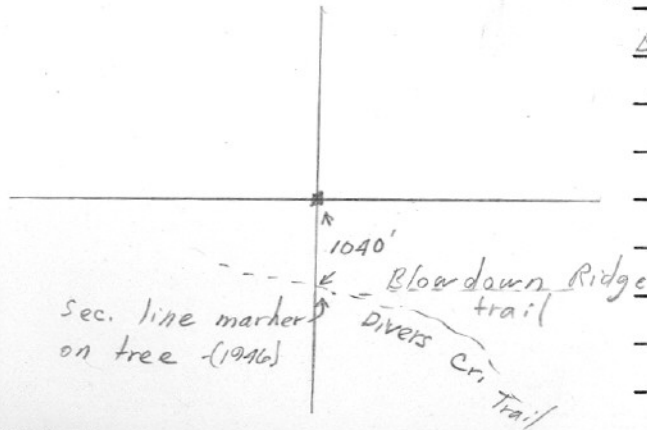
CORNER DESCRIPTION

W 1/4 Cor

BT - Hemlock 6' W

mhd. 1/4 S

Ed. by V.B.E., May, 1946



W.O. REF.

CARD.....

OF



Found
Orig. 10" Now 13" Hemlock snag 30' high
S 70 W 7.9' Scribing 1/45 visible
Mk.
R/R spike in the center of 38" D-Pin
stump S 30 E 32.8'

↑

From Bishop survey

80091

204