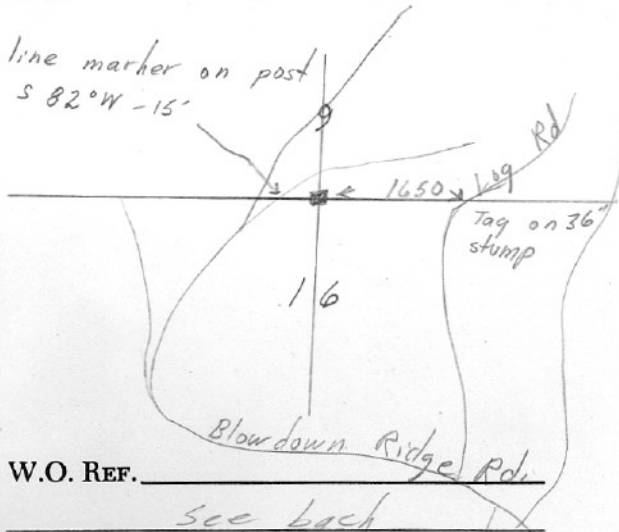


SECTION OR SUBDIVISION

CORNER No. 203

TWP. 11N, RANGE 9 E, W.M.

CORNER DESCRIPTION



N 1/4

4" x 4" x 36" Post

mhd. 1/4 S9, 1/4 S16

Tag 15' S 82° E,

signed with a fish

(6/23/48) on 30" stump

similar to those set

by Bert Udall

Ed. by R. Ward 9/19/60

W.O. REF. \_\_\_\_\_

see back

CARD \_\_\_\_\_ OF \_\_\_\_\_

W. approach

From A-way junct. - take rt. rd. to E. -  
150' E-spur rd runs off to ESE - stump on  
S. side rd. - very brushy area

E. approach or

Rd leads N. off Blowdown Ridge just past  
Δ cut leading down to lake branch

203