

SECTION OR SUBDIVISION

TWP. 15, RANGE 9 E, W.M.

CORNER No. 162

CORNER DESCRIPTION

I.P. 3/4" w/BRASS CAP

USGLO 1940 1/4 5/8

W.H.W. 16" D.B.H. S 30° E 24'

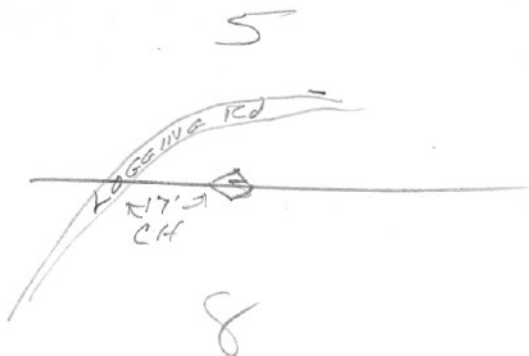
D.FIR. 20" D.B.H. SNAG READABLE

N 39° E 52 FT

FOUND E.S.N. 7-5-66

W.O. REF. _____

CARD _____ OF _____



HOOD RIVER COUNTY RESTORATION FORM

Section: 5 Township: 1S Range: 9E DATE: 3/5/2012

CORNER DESIGNATION
SOUTH QUARTER CORNER

- Condition Report Only
- Not Found
- Renewed
- Unrecorded
- Surveyed In
- X--- Referenced Out

Previous Renewals/Surveys, etc. IN MAY OF 1940 PUBLIC LAND SURVEYOR LEONARD CARTER UNDER GROUP #194 COMMENCED A SURVEY OF THE SOUTH AND WEST BOUNDARIES AND A PORTION OF THE SUBDIVISIONAL LINES COMPLETING THE TOWNSHIP 1 SOUTH RANGE 9 EAST

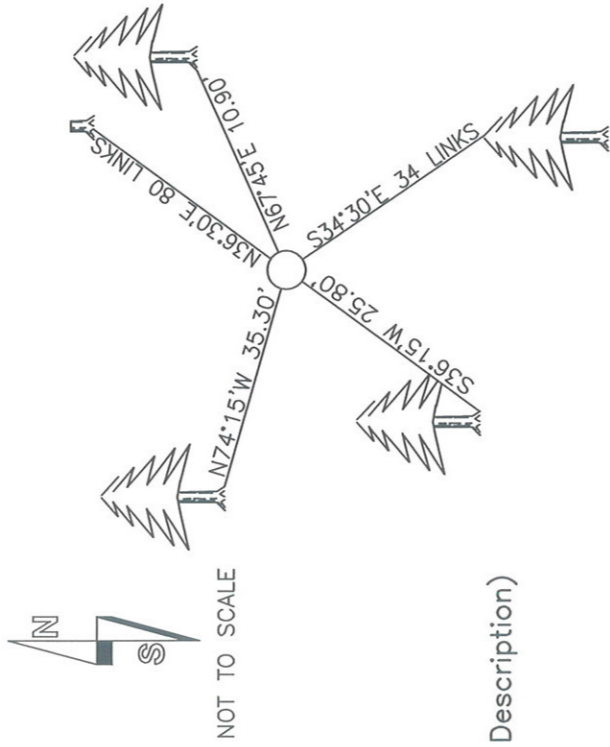
Monument(s) & Accessories Found: (Condition and Source)

FOUND AND HELD 2.5" GLO BRASS CAP STAMPED AS SHOWN EXPOSED 0.6' WITH A MOUND OF STONE 2' X 2' X 1.5' APPROXIMATELY 2' NORTH OF CORNER AS DESCRIBED IN THE GLO FIELD NOTES. EXISTING BLAZED LINE RUNNING EAST OUT OF CORNER. EXISTING REFERENCES: (OBT) ROTTED FIR STUMP WITH VISIBLE SCRIBING N 36°30' E 80 LINKS, ADDED 54-3 TAG WITH RECORD INFORMATION
(OBT) 21" LIVE HEMLOCK WITH HEALED FACE S 34°30' E 34 LINKS, ADDED 54-3 TAG WITH RECORD INFORMATION

Monument Detail



Sketch



Monument Set (Procedures and Description)

NO NEW MONUMENT SET

New Accessories

NEW ACCESSORIES WERE TIED FROM CONTROL TRAVERSE AND BEARING ARE REPORTED TO THE NEAREST DEGREE DISTANCES WERE MEASURED TO A SPIKE AT SIDE CENTER WITH A STEEL BUCKERS TAPE

NEW REFERENCES:

- 15" HEMLOCK SCRIBED "1/4 S5 RP" N 67°45' E 10.90' SIDE CENTER
- 23" HEMLOCK SCRIBED "1/4 S8 RP" S 36°15' W 25.80' SIDE CENTER
- 36" HEMLOCK SCRIBED "1/4 S5 RP" N 74°15' W 35.30' SIDE CENTER

Location & Comments

ABOUT 200 FEET EAST OF OLD LOGGING ROAD AT LINE CROSSING

Compass Declination 18' EAST

Firm/Agency LONGVIEW TIMBER CORP.

Address 10 INTERNATIONAL WAY LONGVIEW, WA 98632

Party Chief JASON L SIMES

Notes JASON L SIMES

Witness ED BROWN

Surveyors Seal

REGISTERED PROFESSIONAL LAND SURVEYOR

Jason L Simes 3-7-2012

OREGON
NOVEMBER 10, 2009
JASON L. SIMES
832566PLS

Expires 6-30-2012