

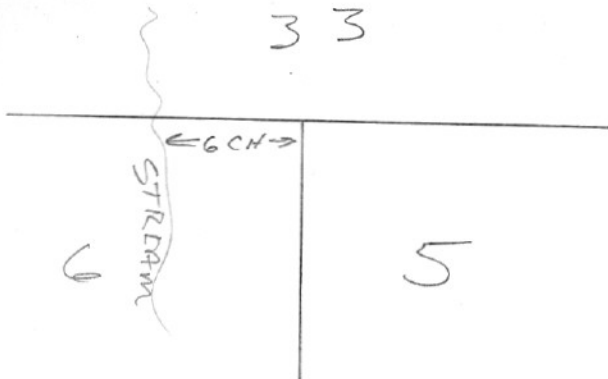
SECTION OR SUBDIVISION

TWP. 15, RANGE 9 E, W.M.

CORNER No. 161

CORNER DESCRIPTION

I.P.W BRASS CAP IN MOUND
OF ROCK NO RT'S AD.
COR ON BPA R.W. 1317
S. OF LINE
FOUND J.M. SHARKEY
9-1-60



W.O. REF. _____

CARD..... OF

HOOD RIVER COUNTY RESTORATION FORM

Section: 5 Township: 1S Range: 9E DATE: 3/5/2012

CORNER DESIGNATION
SOUTHWEST SECTION CORNER

Northwest

----	Condition Report Only
----	Not Found
----	Renewed
----	Unrecorded
----	Surveyed In
—X—	Referenced Out

Previous Renewals/Surveys, etc. IN MAY OF 1940 PUBLIC LAND SURVEYOR LEONARD CARTER UNDER GROUP #194 COMMENCED A SURVEY OF THE SOUTH AND WEST BOUNDARIES AND A PORTION OF THE SUBDIVISIONAL LINES COMPLETING THE TOWNSHIP 1 SOUTH RANGE 9 EAST

Monument(s) & Accessories Found: (Condition and Source)

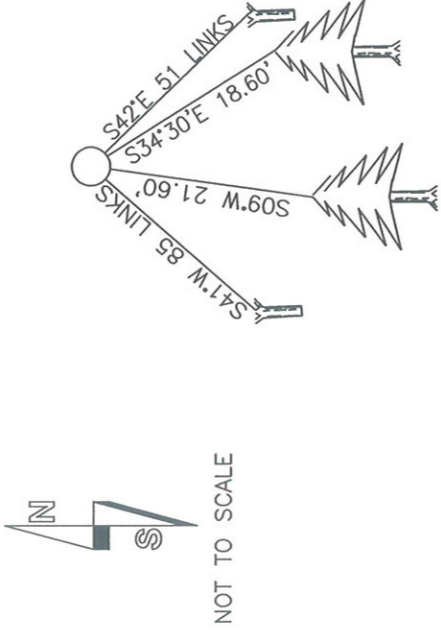
FOUND AND HELD 2.5" GLO BRASS CAP STAMPED AS SHOWN EXPOSED 1.5' WITH A MOUND OF STONE 2' X 2' X 1.5', APPROXIMATELY 2' SOUTH OF CORNER AS DESCRIBED IN THE GLO FIELD NOTES. EXISTING BLAZED LINE RUNNING EAST AND WEST OUT OF CORNER. EXISTING REFERENCES:

(OBT) WIND TOSSED FIR WITH VISIBLE SCRIBING S 42° E 51 LINKS, ADDED 54--3 TAG WITH RECORD INFORMATION
(OBT) WIND TOSSED FIR WITH HEALED FACE S 41° W 85 LINKS, ADDED 54--3 TAG WITH RECORD INFORMATION

Monument Detail



Sketch



Monument Set (Procedures and Description)

NO NEW MONUMENT SET

New Accessories

NEW ACCESSORIES WERE TIED FROM CONTROL TRAVERSE AND BEARING ARE REPORTED TO THE NEAREST DEGREE DISTANCES WERE MEASURED TO A SPIKE AT SIDE CENTER WITH A STEEL BUCKERS TAPE

NEW REFERENCES:

10" FIR SCRIBED "T1S R9E S5 CC RP" S 34°30' E 18.60' SIDE CENTER
15" FIR SCRIBED "T1S R9E S6 CC RP" S 09° W 21.60' SIDE CENTER

Location & Comments

ABOUT 300 FEET NORTH OF NORTH EDGE OF POWER TRANSMISSION LINE RIGHT OF WAY

Compass Declination 18' EAST
Firm/Agency LONGVIEW TIMBER CORP.

Surveyors Seal

REGISTERED PROFESSIONAL LAND SURVEYOR

Jason L Simes 3-7-2012

OREGON
NOVEMBER 10, 2009
JASON L. SIMES
83256PLS

Address 10 INTERNATIONAL WAY
LONGVIEW, WA 98632

Party Chief JASON L SIMES

Notes JASON L SIMES

Witness ED BROWN

Expires 6-30-2012