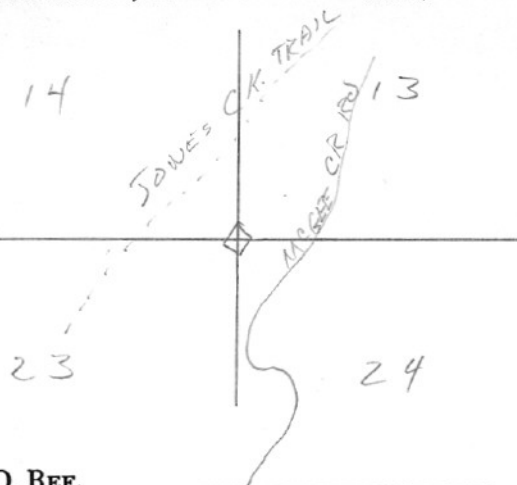


SECTION OR SUBDIVISION

CORNER No. 122

TWP. 15, RANGE 8, W.M. E

CORNER DESCRIPTION



I.P. BRASS CAP 1 1/4" X 1 1/2" ABOVE
GROUND MOUND OF ROCK IS
WEST OF ABE NO B.T.S. AREA
IS LOGGED ON COR IS P.D.
OF JONES CK. RD.

W.O. REF.

CARD OF