

SECTION OR SUBDIVISION

6/7

CORNER No.

107

TWP. 311, RANGE 2 E, W.M.

CORNER DESCRIPTION

1/4 Corner between Sec.
6/7

Found 48" Red Fir Stamp
No marks - Referenced
Corner 7-9-67

Tennessee - Verl Fraley
Corner 2" IP 1' deep
Set 1/2" IP in center

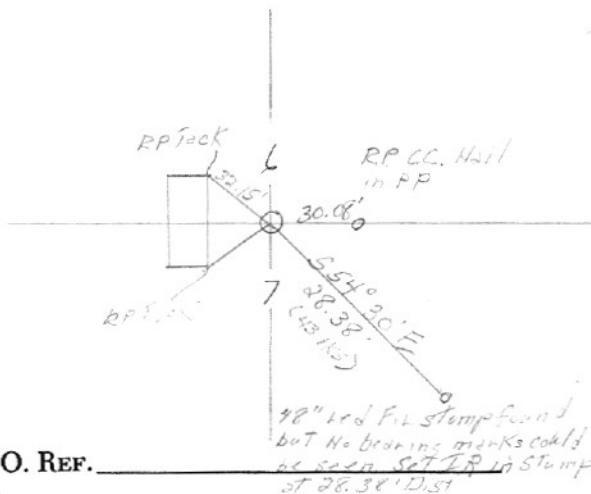
6" Deep

Corner agrees with G/O
notes

CARD

OF

3



W.O. REF.

Tennessee 3706

SECTION OR SUBDIVISION

SEC. 7 N $\frac{1}{4}$ COR.

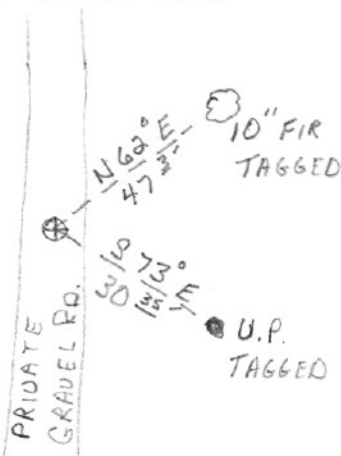
CORNER No. ~~635~~ 107

TWP. 2N, RANGE 8 E, W.M.

CORNER DESCRIPTION

BRASS CAP SET IN
2" I.P. APPROX. 3"
BELOW SURFACE OF RD.
6-73 HRCO.

WOOD
SHED



W.O. REF. _____

CARD 2 OF 3

SECTION OR SUBDIVISION

1/4 cor 6/7

CORNER No.

107

TWP. 2N, RANGE 8E, W.M.

CORNER DESCRIPTION

12

FOUND: Bk. 3-P. 12

Orig. 30" now 30" rotted stump sheared flush with ground S54 1/2E 28.4'
NW BT gone

Monument 6" below surface of road stamped

1/4 COR MARKED:

S6 12" D-Fir with an Aluminum nail on North side N49W 40.4'

S7 10" D-Fir " " " " SW " S30 1/2E 30.0'

T2N R8E

W.O. REF.

CS # 87047

CARD

3

OF

3

HOOD RIVER COUNTY

T 2N . R 8E , W.M.

Corner Code No. CC0107

Segregated Surveys:

Name 1/4 Corner Sections 6 and 7 Corner No. _____
(DLC, HES, Tract, Mining Claim, Indian Allotment, Federal Reserve, Townsite)

1. History of Corner Establishment and Subsequent Restoration:

1/4 Corner was remonumented in 1973 by Hood River County Survey Department

2. Description of Evidence Found:

Hood River County Survey Department found iron pipe in 1973.

3. Describe Monument, Accessories and Corollary Data to Perpetuate this Corner Location, Diagram corner and indicate meridian and reference to map of record. Surveyor's Field Book No. _____ Page No. _____ Date of work _____.

1/4 corner is a brass cap set in monument case
10" Fir with tag bears N 62" E 47.3 feet
Power pole with tag bears S 73° E 30.35 feet.

Oregon Plane Coordinates: North Zone, X 1,649,884.65 Y, 735,767.787

Second Order Accuracy. Derived from: _____,

Pin Pointed on Photo No. _____ Date _____ Located at _____

Note: X - Easting
Y - Northing

CC0107

Brass cap set in 2" iron pipe approximately 3" below surface of road

DESCRIPTION OF SURVEY STATION

STATE OREGON

COUNTY HOOD RIVER

NAME OF STATION N 1/4 Cor. Sec. 7 T2N, R8EWM

JOB NO. 18-75

CHIEF OF PARTY David Downing FIELD NOTES same

DATE 11-18-75

STATION MARK	SURVEY POINTS AND PROMINENT OBJECTS WHICH CAN BE SEEN FROM GROUND STATION	DISTANCE	BEARING
C-G	Railroad spike with punch mark NOTE: All bearings and distances are Oregon State Plane Coordinates, North Zone	215.40	N00°17'57"E

FOREST LANE

