

SECTION OR SUBDIVISION 30-31

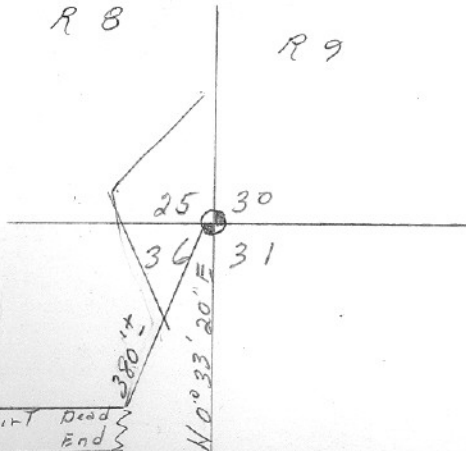
CORNER No. 91

TWP. 1N., RANGE 9 E, W.M.

CORNER DESCRIPTION

R 8

R 9



N W Cor Sec 31  
fd 1 1/2" Pipe w/cap

Y - 683,619.03  
X - 1,678,251.48

10' dirt Dead Rd Ends

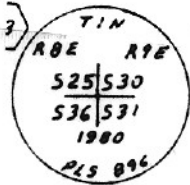
W.O. REF.

Tennessee #3737 Cor # 258

see back

CARD OF OVER

From Bishop Survey # 80091



Found and Buried alongside monument set  
 a 1 1/2" Iron Pipe with a 2" Aluminum cap  
 Orig. 26" Now uprooted D-Fir snag - Hole  
 Bears N45W 4.6'  
 MHD.  
 AIA SPIG in center of 28" D-Fir STUMP  
 N21W 6.3'  
 AIA SPIG in center of 28" D-Fir STUMP  
 S78E 19.5'  
 16" Hemlock N62E 49.2' scribed TINR9E530

Sec. Cor.  
 Rock - fd. by V.B.F. - 2/15/44  
 B.T.'s  
 16" D. fir snag  
 TIN R9E S31  
 22" D. fir snag  
 scribed on bark  
 R.G.S.  
 11/11/55

