

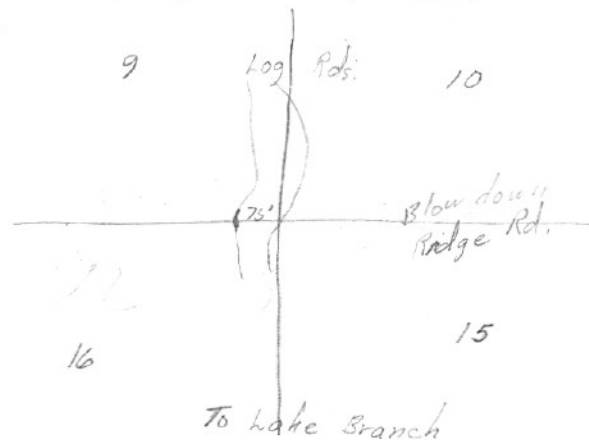
SECTION OR SUBDIVISION

9110
16115

CORNER No. 71

TWP. 11N., RANGE 7 E, W.M.

CORNER DESCRIPTION



Found by Geo. Frey
11-14-67, No identification given.
(Tag ^{+ board} on 36" stump - N. side
of rd. 62' N. of cor.
8/11/58)

4" x 4" x 36" stake -
same as type set by
Bee Udall

by R. Ward - 9/19/60
1/2" IP LEAD CAP. VISITED
A. HUTSON 7-70

CARD OF

W.O. REF.

PROPERTY CORNER INVESTIGATION

CC0071

LOCATION

T. 14 R. 9EMer. _____ State Oreg.

Forest _____ Dist. _____



LEGEND

- Corner searched-no evidence
 Corner or accessory found
 Corner marked by perm. mon.

DESCRIPTION OF FOUND CORNER

MATERIAL: pipe lead cap SIZE: 1 1/2"HEIGHT ABOVE GROUND: 2' CONDITION: _____MARKINGS: 9-10 - 15-16

DESCRIPTION OF FOUND ACCESSORIES

corner set by Frey
 But was not witnessed
 by trees - Road about 75'
 west of corner
 No evidence of original

NOTE: Indicate full investigative details on back of form.

PHOTO IDENTIFICATION

Symbol & date _____ Line or Roll _____ Exposure _____

How Identified _____ Where filed _____

RECOVERED BY: _____

DATE: _____ TITLE: _____