

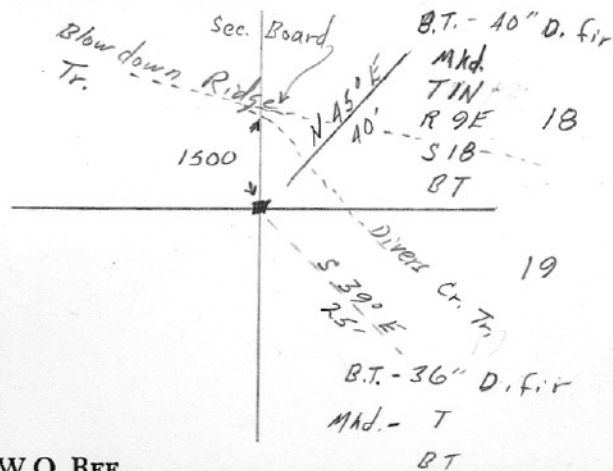
SECTION OR SUBDIVISION

13/18
24/19

CORNER No. 70

TWP. 1 N, RANGE 8 & 9 E, W.M.

CORNER DESCRIPTION



Found by Geo. Frey

11-61. No identification given.

Rock

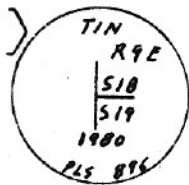
Ed. by V.R.E. - May 27, 1944

W.O. REF. _____

CARD OF

OVER →

70



Found
Orig. 30" Now 32" D-Fir STUMP 5' High
N88E 33.0' Bark scribing TIN R9E 210 BT
Visible
Orig. 40" Now 44" D-Fir STUMP 6' High
S45E 27.2' (Record 32.3) Bark scribing
TIN visible



From Bishop
Survey # 80091