

SECTION OR SUBDIVISION

CORNER No. 63

TWP. 1N, RANGE 2E, W.M.

CORNER DESCRIPTION



Hwy 287 → H.P.

1/4 Cor.  
cap + pipe  
set by Geo Fry  
around 1963

1/2" ID set 1981  
by DLG by single  
portation.

W.O. REF.

see 282

CARD 1 OF 2

SECTION OR SUBDIVISION

1 N 9 E / 1 N 10 E

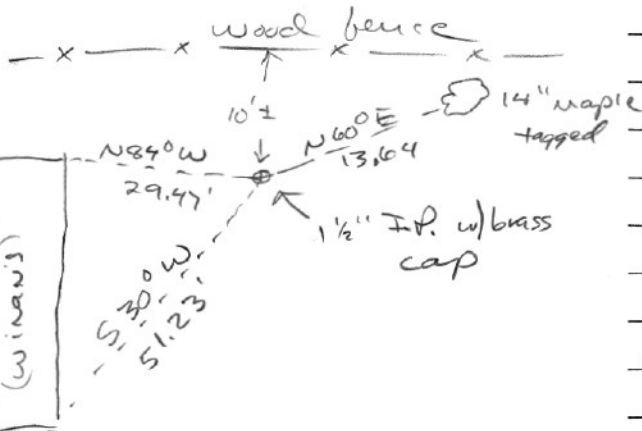
1/6 1/4 COR

CORNER No.

63

TWP. 14 N, RANGE 9 E, W.M.

CORNER DESCRIPTION



Set 1 1/2" I.P. w/brass cap.

removed 2" pipe  
set by Frey.

N 45° E 7.36'

see CS # 930  
& separate narrative

Nov. 1993

W.O. REF.

CARD 2 OF 2