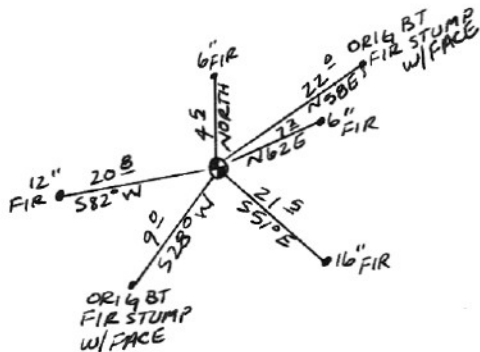


SECTION OR SUBDIVISION

28	27
33	34

TWP. 2N, RANGE 9 E, W.M.CORNER No. 43

CORNER DESCRIPTION

CORNER REMONUMENTEDBY TENNESON ENG. ON12/10/79. RESET BY ORIG BT'SAND ROCK WITH 'X' CHISELEDON TOP.SET B.C. MON.

W.O. REF. _____

CARD _____ OF _____

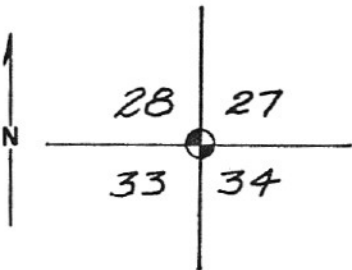
Index File No. V-13

CORNER RECORD (SEARCH)
(Ref. FSM 7151.4)

CC0043
Tract or Survey No. CS81-097 Cor. No. 28-27-33-34 Sections

T 2 N. R. 9 E. R.D. Hood River County Hood River
Merid. Willamette N.F. Mt. Hood State Oregon

CORNER DIAGRAM



DESCRIBE CORNER MONUMENT FOUND

A rock with an "X" chiseled on top, 10" above ground and mound of stone. Rotted 2"x2" post.

DESCRIBE BEARING TREES OR OTHER OFFICIAL ACCESSORIES FOUND

- 28" fir stump with partial face bears N 58° W. 22.0 ft. dist.
- 30" fir stump with partial face bears S. 28° W. 9.0 ft. dist.
- 14" doug. fir with healed face bears N. 85° W. 9.0 ft. dist.
- 18" doug. fir with healed face bears S. 4° W. 16.0 ft. dist.
- 17" doug fir with healed X bears S. 82° E. 13.0 ft. dist.

PHOTO IDENTIFICATION DATA

Photo No. _____
Filed At. _____
Object Ident. _____
Ident. By _____
Signature

DESCRIBE CORNER LOCATION RELATIVE TO NEAR-BY FEATURES, ALSO HOW TO REACH CORNER

From end of spur logging road go northerly 350 ft., more or less to corner. Painted blazed lines run south and east from corner

PLANE COORDINATE POSITION DATA

State Oregon Zone North
X 714,405.99
Y 1,695,920.95
Estab. By TEC
Agency

Signature
Lawrence E. Jones

Title Surveyor Division _____ Headquarters _____

Date June, 1980 7100-52 (3.68)

CORNER RECORD (PERPETUATION)

V-13

MONUMENT: DESCRIBE NEW MONUMENT SET, OR WORK DONE TO PRESERVE EXISTING MONUMENT

Brass cap on 2-1/2" pipe, 30 inches long, 24 inches in the ground and mound of stone.



ACCESSORIES: DESCRIBE NEW BT'S WITNESS OBJECTS ETC. ESTABLISHED, OR WORK DONE TO PRESERVE EXISTING EVIDENCE

- A 12" fir bears S. 82° W. 20.8 ft. dist., marked S33 BT.
- A 16" fir bears S. 51° E. 21.5 ft. dist., marked S 34 BT.
- A 6" fir bears N. 62° E. 7.2 ft. dist., marked S. 27 BT.
- A 6" fir bears North 4.5 ft. dist., marked S. 28 BT.

Work Done By Lawrence E. Jones Title Surveyor Date 6/80 State Registration No. LS 994
or Agency _____

Certified Cor. Record Prepared? Yes No Filed At. _____ Date _____

REMARKS

USDA-FOREST SERVICE

CC0043

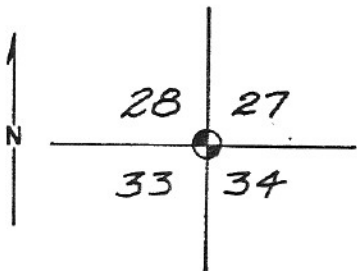
Index File No. V-13

CORNER RECORD (SEARCH)
(Ref. FSM 7151.4)

Tract or Survey No. CS81-097 Cor. Sections No. 28-27-33-34

T 2 N. R. 9 E. R.D. Hood River County Hood River
Merid. Willamette N.F. Mt. Hood State Oregon

CORNER DIAGRAM



DESCRIBE CORNER MONUMENT FOUND

A rock with an "X" chiseled on top, 10" above ground and mound of stone. Rotted 2"x2" post.

DESCRIBE BEARING TREES OR OTHER OFFICIAL ACCESSORIES FOUND

28" fir stump with partial face bears N 58° E. 22.0 ft. dist.
30" fir stump with partial face bears S. 28° W. 9.0 ft. dist.
14" doug. fir with healed face bears N. 85° W. 9.0 ft. dist.
18" doug. fir with healed face bears S. 4° W. 16.0 ft. dist.
17" doug fir with healed X bears S. 82° E. 13.0 ft. dist.

PHOTO IDENTIFICATION DATA

Photo No. _____
Filed At. _____
Object Ident. _____
Ident. By _____
Signature

DESCRIBE CORNER LOCATION RELATIVE TO NEAR-BY FEATURES, ALSO HOW TO REACH CORNER

From end of spur logging road go northerly 350 ft., more or less to corner. Painted blazed lines run south and east from corner

PLANE COORDINATE POSITION DATA

State _____ Zone _____
X _____
Y _____
Estab. By _____
Agency

Lawrence E. Jones
Signature

Title
Surveyor

Division

Headquarters

Date
June, 1980

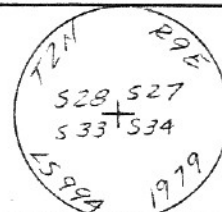
7100-52-(3/68)

CORNER RECORD (PERPETUATION)

V-13

MONUMENT: DESCRIBE NEW MONUMENT SET, OR WORK DONE TO PRESERVE EXISTING MONUMENT

Brass cap on 2-1/2" pipe, 30 inches long, 24 inches in the ground and mound of stone.



ACCESSORIES DESCRIBE NEW BT'S WITNESS OBJECTS ETC. ESTABLISHED, OR WORK DONE TO PRESERVE EXISTING EVIDENCE

A 6" fir bears S. 82° W. 20.8 ft. dist., marked S33 BT.
A 16" fir bears S. 51° E. 21.5 ft. dist., marked S 34 BT.
A 6" fir bears N. 62° E. 7.2 ft. dist., marked S. 27 BT.
A 6" fir bears North 4.5 ft. dist., marked S. 28 BT.

Work Done By Lawrence E. Jones Title Surveyor Date 6/80 State Registration No. LS 994
or Agency _____

Certified Cor. Record Prepared? Yes No Filed At: _____ Date _____

REMARKS