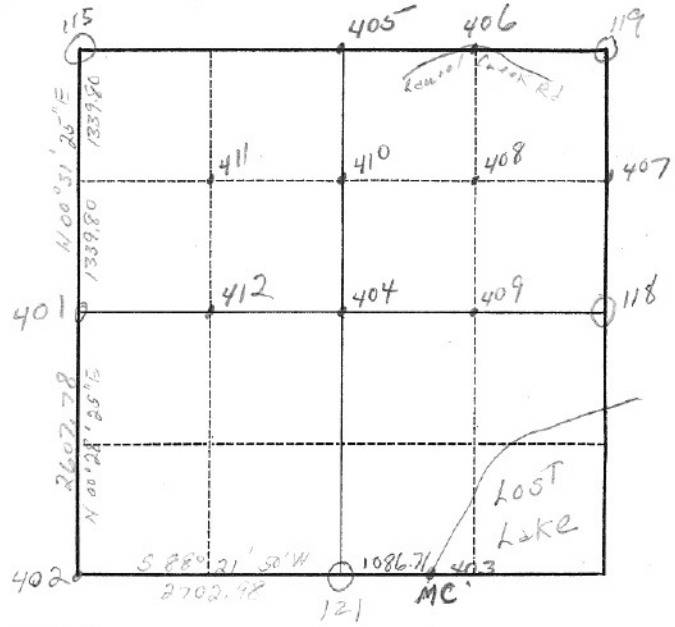


TWP.....15....., RANGE.....8..... E., W.M.

SECTION.....9.....



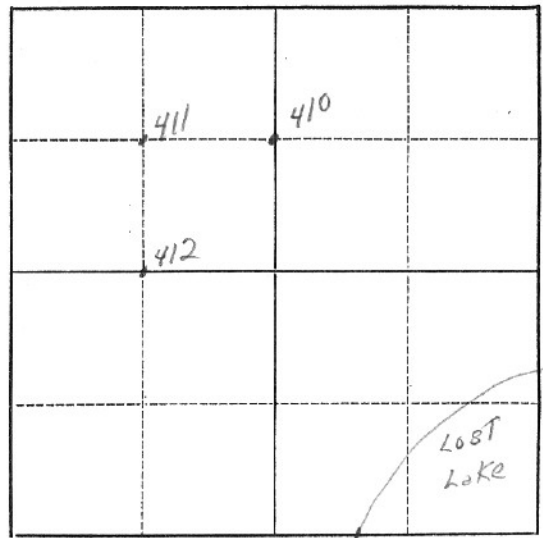
45,889	115 ✓
1/4 Cor 9 & 10	118 ✓
3/4 9 & 10	119 20 acres
1/4 Cor 9 & 16	121 ✓
W 1/4 8/9	401
SW Cor	402
C 1/4	404
N 1/4	405
E 1/6 4/9	406
N 1/6 9/10	407
NE 1/6	408
CE 1/6	409

see card #2

Card 2 of 2

TWP. 15, RANGE 8 E., W.M.

SECTION 9



- CN 1/4 410
- NW 1/4 411
- SW 1/4 412
- MC SE 403
- NW Section
- _____
- _____
- _____
- _____
- _____
- _____
- _____

MC 403